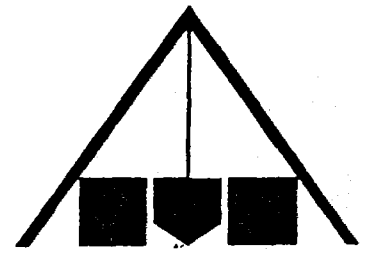


BAUHERR: GEMEINDE NEUHEIM
 OBJEKT: WASSERVERSORGUNG NEUHEIM

BOHRPROFIL SB 3 / 76

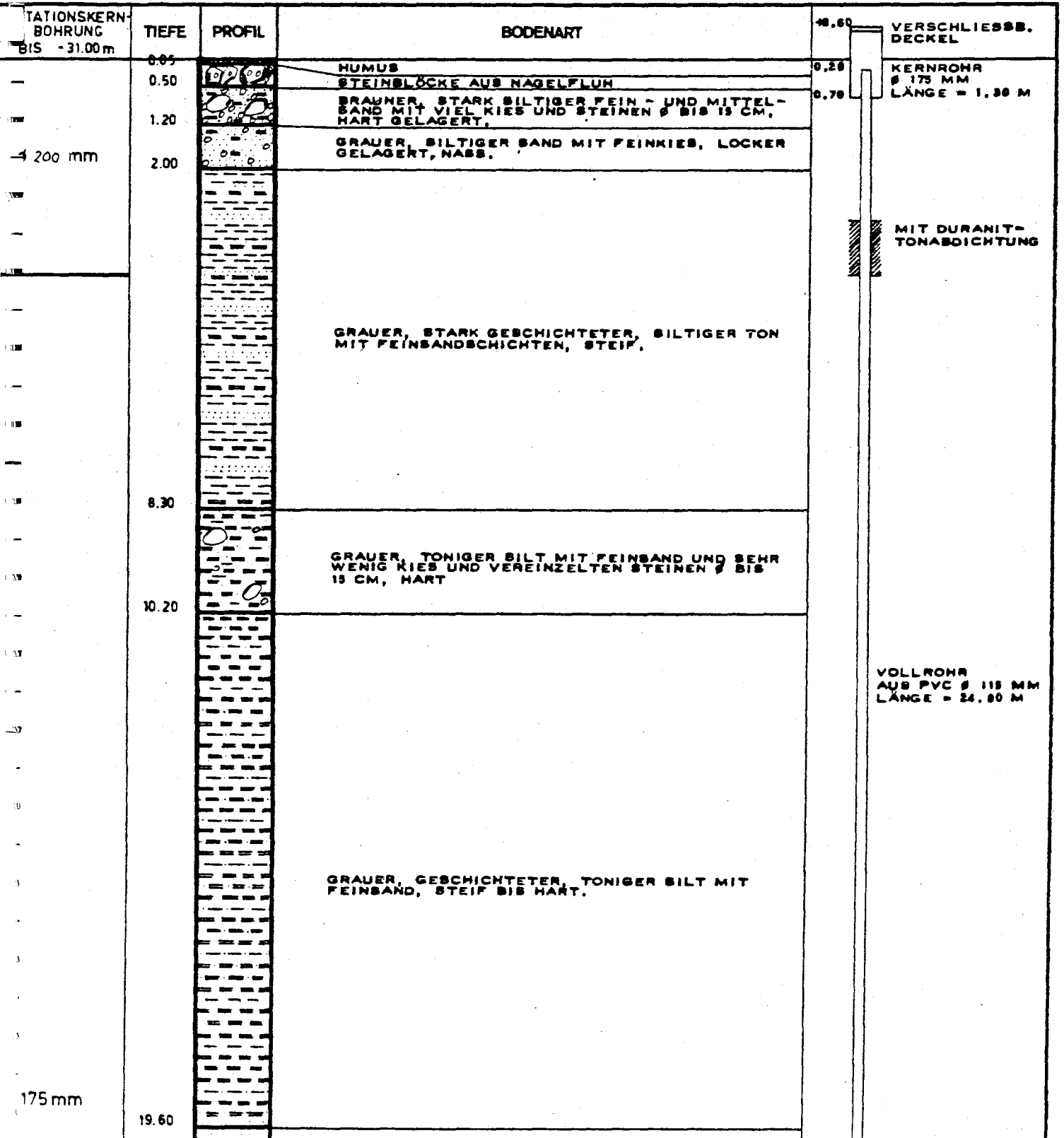
MASSTAB: 1:100



Gebr. Mengis Luzern

MEERESHÖHE: 599 m	KOORD: 686 920 / 229 100	BN: LUIGI VASELLI	PLAN-NR: 76 883-3	LUZERN 8. 6. 1976	E.H.
-------------------	--------------------------	-------------------	-------------------	-------------------	------

FILTERSTELLUNG



175 mm

