

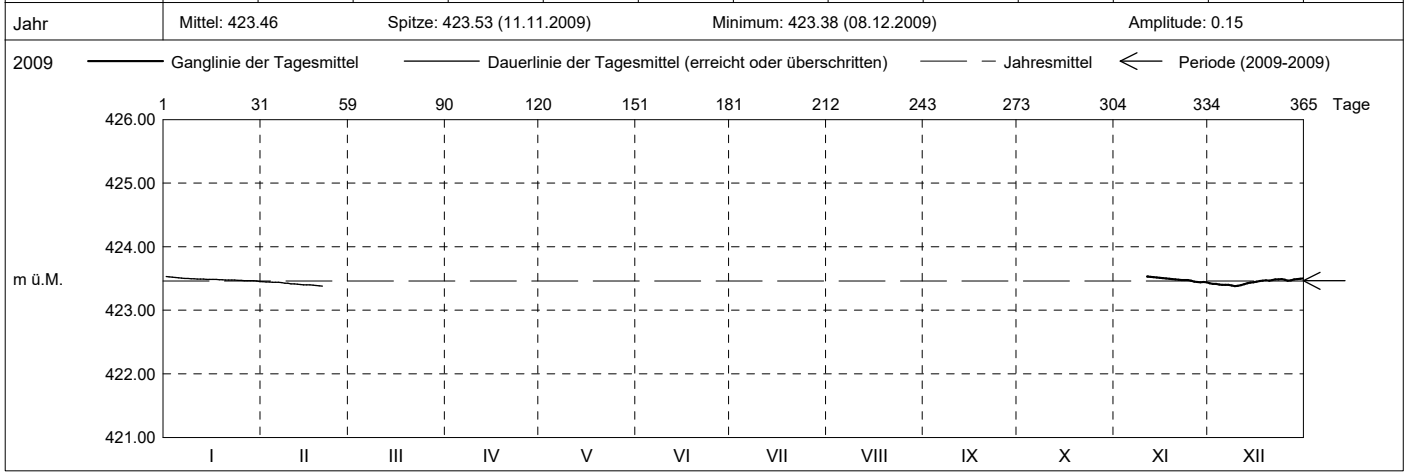
Grundwasserstände

Nr. 6223 Hatwil 2/09 - Cham
 Koordinaten: 2'675'854' / 1'230'065'

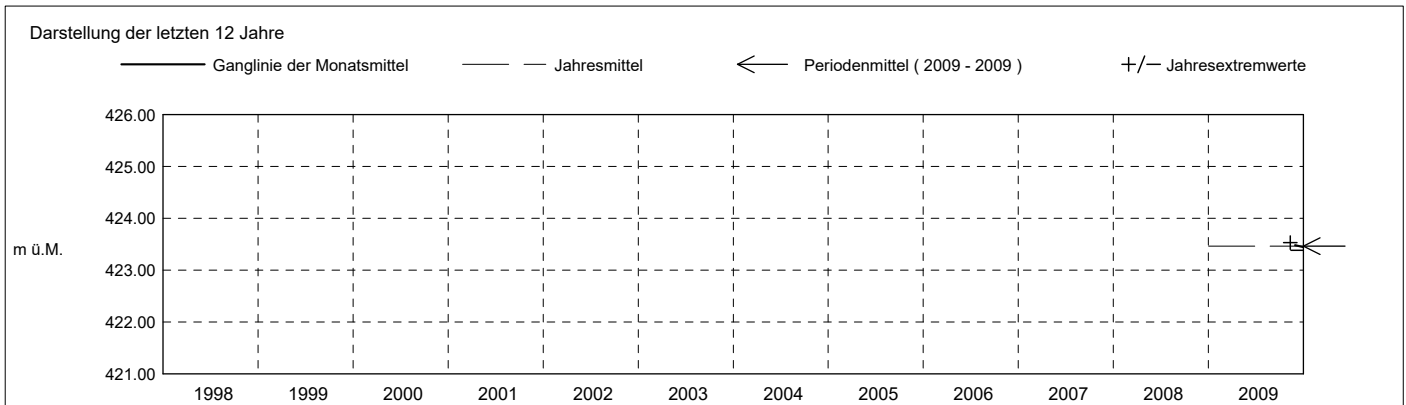
KANTON ZUG
 Amt für Umwelt

Abstichpunkt: 443.13 m ü.M. OK Terrain: 443.43 m ü.M.

2009		janvier	février	mars	avril	mai	juin	juillet	août	septembre	octobre	novembre	décembre		
Tagesmittel	1												423.42	1	
	2												423.42	2	
	3												423.42	3	
	4												423.41	4	
	5												423.40	5	
	6												423.40	6	
	7												423.40	7	
	8												423.39	8	
	9												423.38	9	
	10												423.39	10	
m ü.M.	11											423.53 +	423.40	11	
	12											423.52	423.41	12	
	13											423.52	423.42	13	
	14											423.51	423.43	14	
	15											423.51	423.44	15	
	16											423.50	423.45	16	
	17											423.50	423.46	17	
	18											423.49	423.46	18	
	19											423.49	423.47	19	
	20											423.48	423.47	20	
+ Maximum	21											423.48	423.48	21	
	22											423.48	423.49	22	
	23											423.47	423.48	23	
	24											423.48	423.49	24	
	25											423.47	423.48	25	
	26											423.45	423.47	26	
	27											423.45	423.47	27	
	- Minimum	28											423.44 -	423.48	28
		29											423.45	423.49	29
		30											423.44 -	423.50 +	30
31												423.44 -	423.50 +	31	
Monatsmittel											423.48 +	423.44 -	m ü.M.		
Spitze Datum											423.53 + 11.	423.50 - 24.	m ü.M.		
Amplitude											0.10 -	0.12 +	m		
Jahr	Mittel: 423.46		Spitze: 423.53 (11.11.2009)				Minimum: 423.38 (08.12.2009)				Amplitude: 0.15				



Periode		2009 - 2009 (0 Jahre)												
Monatsmittel		0.00 -	0.00 -	0.00 -	0.00 -	0.00 -	0.00 -	0.00 -	0.00 -	0.00 -	0.00 -	423.48 +	423.44	m ü.M.
Monats-Spitze Jahr												423.53 + 2009	423.50 - 2009	m ü.M.
Monats-Minimum Jahr												423.43 + 2009	423.38 - 2009	m ü.M.
Monats-Amplitude Jahr												0.10 - 2009	0.12 + 2009	m ü.M.
Periode		Mittel: 423.46		Spitze: 423.53 (11.11.2009)				Minimum: 423.38 (08.12.2009)				Amplitude: 0.15		



Grundwasserstände

Nr. 6223

Hatwil 2/09 - Cham

KANTON ZUG

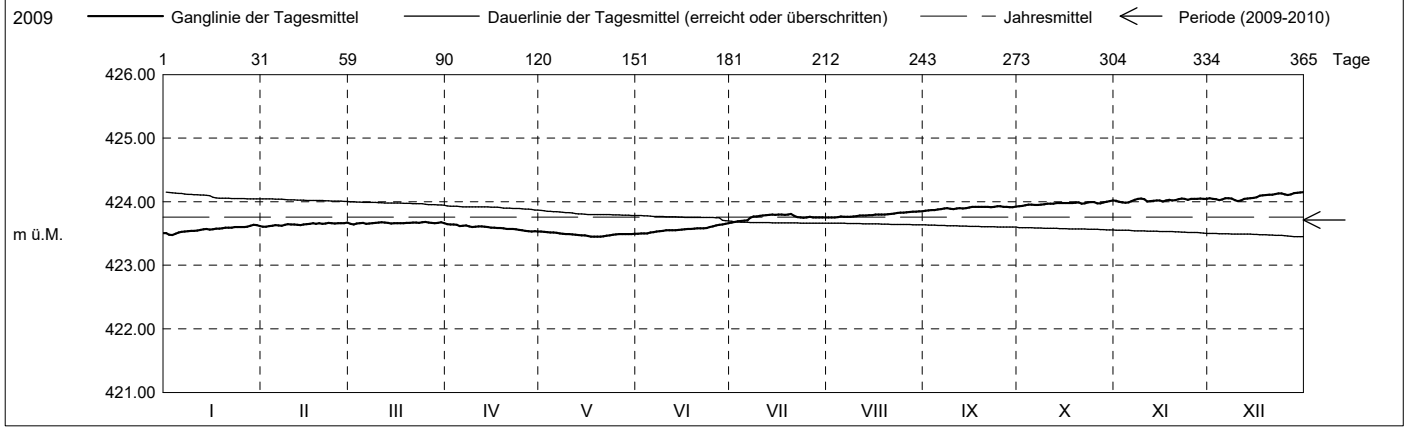
Koordinaten: 2'675'854' / 1'230'065'

Amt für Umwelt

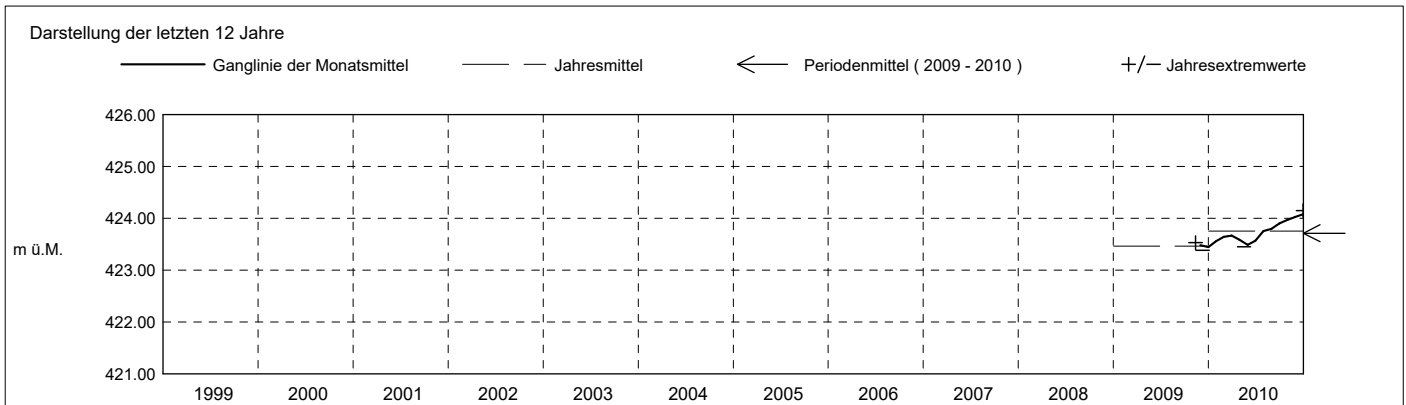
Abstichpunkt: 443.13 m ü.M. OK Terrain: 443.43 m ü.M.

2010	janvier	février	mars	avril	mai	juin	juillet	août	septembre	octobre	novembre	décembre	
Tagesmittel	1 423.51	423.61	423.65	423.64 +	423.53 +	423.49 -	423.67 -	423.75 -	423.86 -	423.93 -	424.01	424.06	1
	2 423.48 -	423.60 -	423.64 -	423.64 +	423.52	423.50	423.68	423.75 -	423.86 -	423.93 -	424.00	424.04	2
	3 423.48 -	423.62	423.65	423.64 +	423.52	423.50	423.69	423.75 -	423.87	423.94	423.98	424.04	3
	4 423.49	423.62	423.66	423.63	423.51	423.50	423.69	423.76	423.87	423.95	423.98 -	424.02	4
	5 423.51	423.63	423.67	423.62	423.51	423.52	423.70	423.77	423.88	423.95	423.99	424.03	5
	6 423.53	423.63	423.65	423.62	423.51	423.52	423.71	423.76	423.88	423.95	424.01	424.06	6
	7 423.53	423.62	423.66	423.63	423.50	423.53	423.75	423.76	423.89	423.95	424.03	424.05	7
	8 423.54	423.64	423.66	423.61	423.50	423.54	423.77	423.77	423.90	423.95	424.04	424.05	8
	9 423.54	423.65	423.67	423.60	423.49	423.54	423.77	423.77	423.89	423.96	424.05 +	424.03	9
	10 423.54	423.64	423.67	423.60	423.49	423.55	423.78	423.77	423.88	423.97	424.04	424.01 -	10
m ü.M.	11 423.55	423.64	423.68 +	423.61	423.49	423.55	423.78	423.78	423.89	423.97	424.01	424.02	11
	12 423.55	423.63	423.67	423.61	423.48	423.55	423.79	423.78	423.90	423.97	424.01	424.04	12
	13 423.57	423.63	423.67	423.60	423.47	423.55	423.79	423.78	423.89	423.98	424.01	424.05	13
	14 423.57	423.64	423.66	423.60	423.47	423.56	423.80	423.79	423.90	423.98	424.02	424.06	14
	15 423.56	423.65	423.66	423.59	423.47	423.56	423.79	423.79	423.91	423.98	424.02	424.06	15
	16 423.57	423.65	423.66	423.59	423.46	423.57	423.80	423.80	423.92	423.98	424.01	424.07	16
	17 423.57	423.66	423.66	423.59	423.45 -	423.57	423.80	423.80	423.92	423.98	424.02	424.09	17
	18 423.57	423.65	423.66	423.58	423.45 -	423.57	423.79	423.80	423.92	423.98	424.03	424.10	18
	19 423.58	423.66	423.67	423.58	423.45 -	423.58	423.80	423.80	423.92	423.98	424.02	424.11	19
	20 423.59	423.65	423.67	423.57	423.45 -	423.58	423.81 +	423.80	423.92	423.99	424.02	424.11	20
+ Maximum	21 423.59	423.65	423.67	423.57	423.46	423.58	423.78	423.81	423.92	423.97	424.04	424.11	21
	22 423.59	423.66	423.67	423.57	423.46	423.58	423.76	423.81	423.91	423.98	424.05 +	424.12	22
	23 423.60	423.66	423.67	423.56	423.47	423.59	423.75	423.82	423.92	423.99	424.04	424.13	23
	24 423.60	423.66	423.68 +	423.56	423.48	423.60	423.75	423.83	423.93 +	424.00	424.03	424.13	24
	25 423.60	423.66	423.68 +	423.55	423.49	423.61	423.75	423.83	423.93 +	423.99	424.04	424.12	25
	26 423.60	423.66	423.67	423.54	423.49	423.63	423.76	423.83	423.92	423.98	424.05 +	424.10	26
	27 423.60	423.66	423.67	423.54	423.49	423.63	423.75	423.84	423.92	423.98	424.05 +	424.12	27
	28 423.62	423.67 +	423.66	423.53 -	423.49	423.64	423.75	423.84	423.91	423.99	424.05 +	424.13	28
	29 423.64 +	423.67	423.67	423.54	423.49	423.65	423.75	423.84	423.91	424.00	424.05 +	424.14	29
	30 423.63	423.68 +	423.68 +	423.53 -	423.49	423.66 +	423.75	423.85 +	423.92	424.01	424.04	424.15 +	30
31 423.62	423.66	423.66	423.53 -	423.49	423.66 +	423.75	423.85 +	423.92	424.02 +	424.04	424.15 +	31	
Monatsmittel	423.57	423.64	423.66	423.59	423.49 -	423.57	423.76	423.80	423.90	423.97	424.02	424.08 +	m ü.M.
Spitze Datum	423.64 29.	423.68 28.	423.68 11.	423.65 1.	423.53 - 1.	423.67 30.	423.81 20.	423.85 28.	423.93 24.	424.02 31.	424.05 8.	424.15 + 30.	m ü.M.
Amplitude	0.17	0.08	0.04 -	0.12	0.08	0.18 +	0.14	0.10	0.08	0.09	0.07	0.14	m

Jahr Mittel: 423.75 Spitze: 424.15 (30.12.2010) Minimum: 423.45 (17.05.2010) Amplitude: 0.70



Periode	2009 - 2010 (1 Jahre)												
Monatsmittel	423.57	423.64	423.66	423.59	423.49 -	423.57	423.76	423.80	423.90	423.97 +	423.75	423.76	m ü.M.
Monats-Spitze Jahr	423.64 2010	423.68 2010	423.68 2010	423.65 2010	423.53 - 2010	423.67 2010	423.81 2010	423.85 2010	423.93 2010	424.02 2010	424.05 2010	424.15 + 2010	m ü.M.
Monats-Minimum Jahr	423.47 2010	423.60 2010	423.64 2010	423.53 2010	423.45 2010	423.49 2010	423.67 2010	423.75 2010	423.85 2010	423.93 + 2010	423.43 2009	423.38 - 2009	m ü.M.
Monats-Amplitude Jahr	0.17 2010	0.08 2010	0.04 - 2010	0.12 2010	0.08 2010	0.18 + 2010	0.14 2010	0.10 2010	0.08 2010	0.09 2010	0.10 2009	0.14 2010	m ü.M.
Periode	Mittel: 423.71 Spitze: 424.15 (30.12.2010) Minimum: 423.38 (08.12.2009) Amplitude: 0.77												



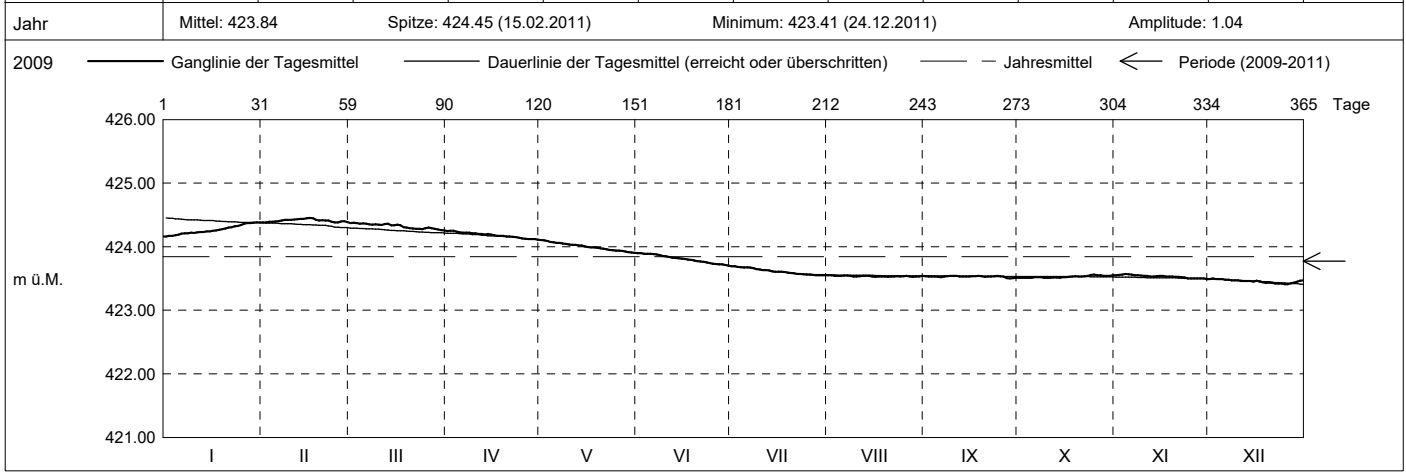
Grundwasserstände

Nr. 6223 Hatwil 2/09 - Cham
 Koordinaten: 2'675'854' / 1'230'065'

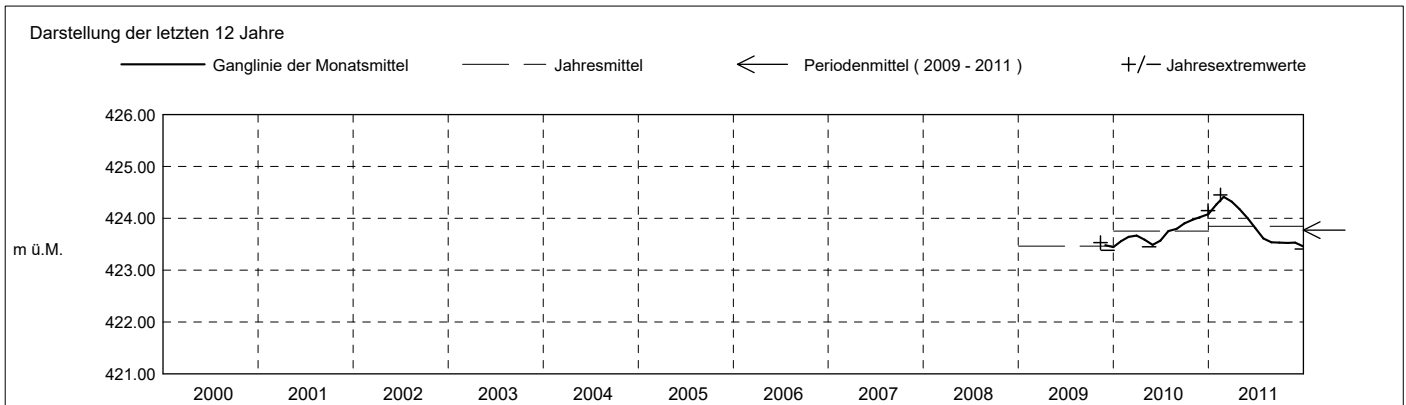
KANTON ZUG
 Amt für Umwelt

Abstichpunkt: 443.13 m ü.M. OK Terrain: 443.43 m ü.M.

2011	janvier	février	mars	avril	mai	juin	juillet	août	septembre	octobre	novembre	décembre																																				
Tagesmittel	1 424.16 -	2 424.38 -	3 424.37	4 424.25 +	5 424.10 +	6 423.90 +	7 423.69 +	8 423.55 +	9 423.53	10 423.51 -	11 423.55	12 423.49	13 423.50 +																																			
	14 424.17	15 424.39	16 424.37	17 424.25 +	18 424.09	19 423.89	20 423.68	21 423.54	22 423.53	23 423.51 -	24 423.56	25 423.49	26 423.49																																			
	27 424.18	28 424.39	29 424.36	30 424.24	31 424.08	1 423.89	2 423.67	3 423.54	4 423.52	5 423.51 -	6 423.57 +	7 423.49	8 423.49																																			
	9 424.19	10 424.40	11 424.36	12 424.22	13 424.07	14 423.89	15 423.67	16 423.54	17 423.52	18 423.51 -	19 423.57 +	20 423.49	21 423.49																																			
	22 424.20	23 424.40	24 424.36	25 424.22	26 424.06	27 423.88	28 423.67	29 423.55 +	30 423.52	31 423.52	1 423.56	2 423.48	3 423.48																																			
	4 424.21	5 424.41	6 424.35	7 424.22	8 424.06	9 423.88	10 423.67	11 423.55 +	12 423.53	13 423.52	14 423.55	15 423.48	16 423.48																																			
	17 424.21	18 424.42	19 424.35	20 424.22	21 424.05	22 423.87	23 423.66	24 423.54	25 423.53	26 423.52	27 423.55	28 423.47	29 423.47																																			
	30 424.22	31 424.42	1 424.35	2 424.21	3 424.04	4 423.85	5 423.64	6 423.53	7 423.54 +	8 423.51 -	9 423.54	10 423.47	11 423.47																																			
	12 424.23	13 424.43	14 424.34	15 424.20	16 424.03	17 423.84	18 423.63	19 423.53	20 423.54 +	21 423.51 -	22 423.54	23 423.46	24 423.46																																			
	25 424.23	26 424.43	27 424.35	28 424.20	29 424.03	30 423.83	31 423.63	1 423.54	2 423.53	3 423.51 -	4 423.53	5 423.46	6 423.46																																			
	7 424.23	8 424.43	9 424.36	10 424.19	11 424.02	12 423.82	13 423.63	14 423.54	15 423.53	16 423.51 -	17 423.53	18 423.46	19 423.46																																			
	21 424.24	22 424.44	23 424.34	24 424.20	25 424.02	26 423.82	27 423.61	28 423.54	29 423.53	30 423.51 -	31 423.54	1 423.46	2 423.46																																			
m ü.M.	3 424.24	4 424.45 +	5 424.33	6 424.19	7 424.01	8 423.81	9 423.60	10 423.53	11 423.53	12 423.52	13 423.54	14 423.45	15 423.45																																			
	16 424.25	17 424.45 +	18 424.35	19 424.18	20 423.99	21 423.80	22 423.60	23 423.53	24 423.54 +	25 423.52	26 423.54	27 423.47	28 423.47																																			
	29 424.26	30 424.44	31 424.34	1 424.17	2 423.99	3 423.80	4 423.60	5 423.53	6 423.54 +	7 423.52	8 423.53	9 423.45	10 423.45																																			
	12 424.27	13 424.42	14 424.31	15 424.17	16 423.99	17 423.79	18 423.60	19 423.53	20 423.54 +	21 423.53	22 423.53	23 423.44	24 423.44																																			
	26 424.28	27 424.41	28 424.30	29 424.17	30 423.98	31 423.78	1 423.59	2 423.53	3 423.54 +	4 423.54	5 423.53	6 423.43	7 423.43																																			
	9 424.29	10 424.42	11 424.29	12 424.16	13 423.97	14 423.77	15 423.58	16 423.53	17 423.52	18 423.53	19 423.52	20 423.43	21 423.43																																			
	22 424.30	23 424.41	24 424.29	25 424.16	26 423.97	27 423.77	28 423.58	29 423.53	30 423.52	31 423.53	1 423.52	2 423.43	3 423.43																																			
	5 424.31	6 424.41	7 424.28	8 424.16	9 423.96	10 423.76	11 423.57	12 423.53	13 423.54	14 423.52	15 423.52	16 423.42	17 423.42																																			
	19 424.32	20 424.39	21 424.28	22 424.15	23 423.95	24 423.75	25 423.57	26 423.53	27 423.54 +	28 423.54	29 423.51	30 423.42	31 423.42																																			
	28 424.33	29 424.38 -	30 424.28	31 424.14	1 423.94	2 423.74	3 423.56	4 423.53	5 423.54 +	6 423.55	7 423.50	8 423.42	9 423.42																																			
	17 424.34	18 424.38 -	19 424.29	20 424.13	21 423.94	22 423.73	23 423.56	24 423.53	25 423.54 +	26 423.56 +	27 423.50	28 423.41 -	29 423.41 -																																			
+ Maximum	26 424.36	27 424.39	28 424.30	29 424.13	30 423.94	31 423.73	1 423.56	2 423.53	3 423.54	4 423.55	5 423.50	6 423.41 -	7 423.41 -																																			
	8 424.37	9 424.40	10 424.29	11 424.12	12 423.93	13 423.72	14 423.56	15 423.53	16 423.54	17 423.51	18 423.52	19 423.42	20 423.42																																			
- Minimum	28 424.37	29 424.39	30 424.28	31 424.12	1 423.92	2 423.72	3 423.55 -	4 423.52 -	5 423.50 -	6 423.54	7 423.50	8 423.44	9 423.44																																			
	29 424.38 +	30 424.38 +	31 424.27	1 424.12	2 423.92	3 423.71	4 423.55 -	5 423.52 -	6 423.51	7 423.54	8 423.50	9 423.45	10 423.45																																			
	30 424.38 +	31 424.38 +	1 424.26	2 424.11 -	3 423.91	4 423.70 -	5 423.55 -	6 423.52 -	7 423.51	8 423.54	9 423.49 -	10 423.46	11 423.46																																			
	1 424.38 +	2 424.38 +	3 424.25 -	4 424.09 -	5 423.90 -	6 423.70 -	7 423.55 -	8 423.52 -	9 423.54	10 423.55	11 423.49 -	12 423.47	13 423.47																																			
Monatsmittel	424.27	424.41 +	424.32	424.18	424.00	423.81	423.61	423.54	423.53	423.53	423.53	423.45 -	m ü.M.																																			
Spitze Datum	424.39 30.	424.45 + 15.	424.38 1.	424.26 2.	424.11 1.	423.91 1.	423.69 1.	423.55 1.	423.55 18.	423.56 24.	423.57 3.	423.50 - 1.	m ü.M.																																			
Amplitude	0.24 +	0.07	0.13	0.15	0.21	0.21	0.14	0.03 -	0.05	0.05	0.08	0.09	m																																			
Jahr	Mittel: 423.84												Spitze: 424.45 (15.02.2011)												Minimum: 423.41 (24.12.2011)												Amplitude: 1.04											



Periode	2009 - 2011 (2 Jahre)																																															
Monatsmittel	423.92	424.03 +	423.99	423.89	423.74	423.69	423.68	423.67	423.72	423.75	423.68	423.66 -	m ü.M.																																			
Monats-Spitze Jahr	424.39 2011	424.45 + 2011	424.38 2011	424.26 2011	424.11 2011	423.91 2011	423.81 - 2010	423.85 2010	423.93 2010	424.02 2010	424.05 2010	424.15 2010	m ü.M.																																			
Monats-Minimum Jahr	423.47 2010	423.60 2010	423.64 + 2010	423.53 2010	423.45 2010	423.49 2010	423.55 2011	423.52 2011	423.50 2011	423.51 2011	423.43 2009	423.38 - 2009	m ü.M.																																			
Monats-Amplitude Jahr	0.24 + 2011	0.08 - 2010	0.13 2011	0.15 2011	0.21 2011	0.21 2011	0.14 2010	0.10 2010	0.08 - 2010	0.09 2010	0.10 2009	0.14 2010	m ü.M.																																			
Periode	Mittel: 423.77												Spitze: 424.45 (15.02.2011)												Minimum: 423.38 (08.12.2009)												Amplitude: 1.07											



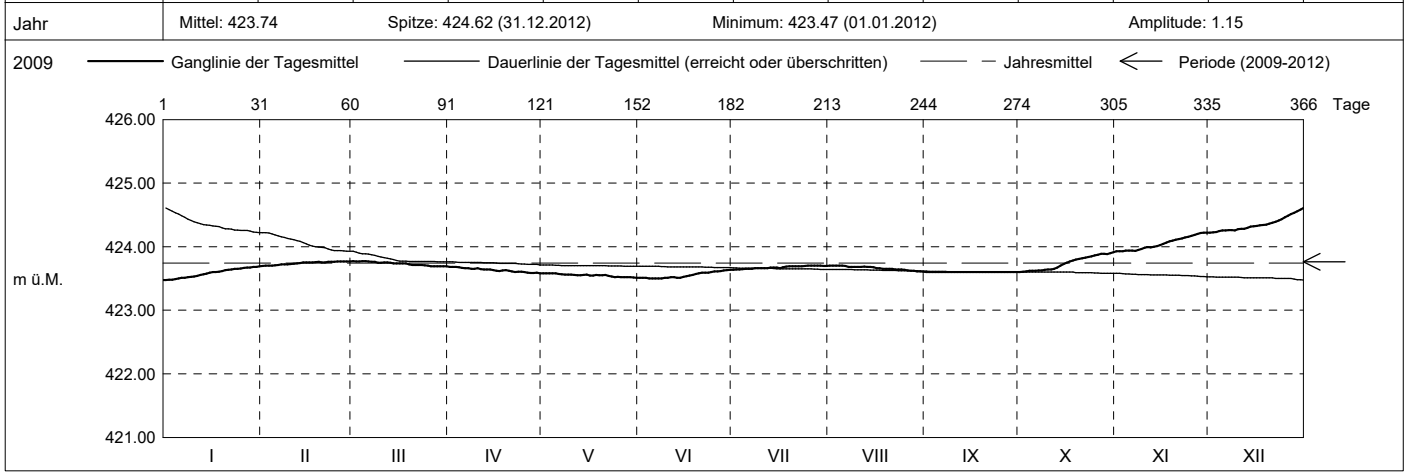
Grundwasserstände

Nr. 6223 Hatwil 2/09 - Cham
 Koordinaten: 2'675'854' / 1'230'065'

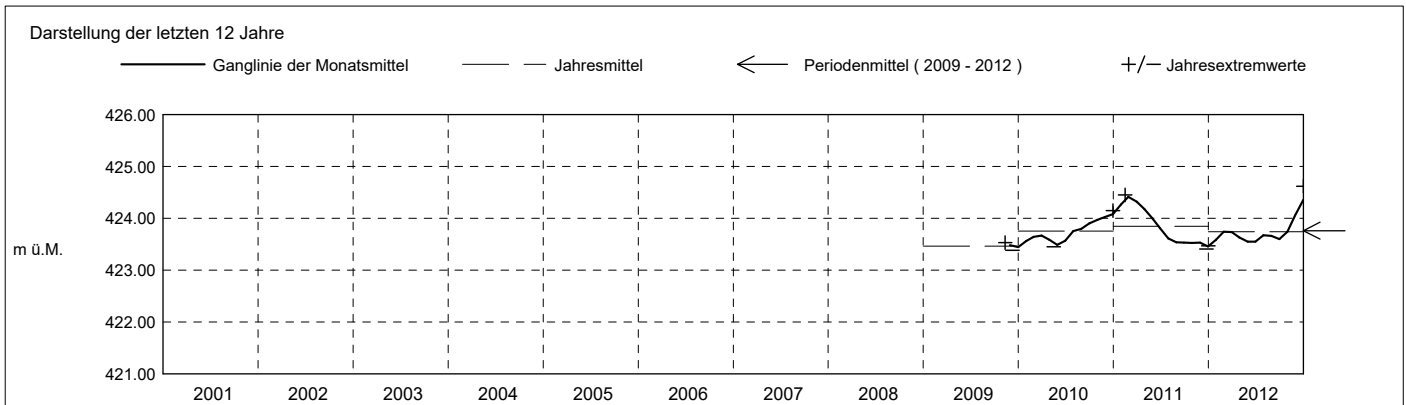
KANTON ZUG
 Amt für Umwelt

Abstichpunkt: 443.13 m ü.M. OK Terrain: 443.43 m ü.M.

2012	janvier	février	mars	avril	mai	juin	juillet	août	septembre	octobre	novembre	décembre																										
Tagesmittel	1 423.47 -	2 423.70 -	3 423.77 +	4 423.68 +	5 423.58 +	6 423.51	7 423.64 -	8 423.70 +	9 423.60 -	10 423.60 -	11 423.93 -	12 424.22 -	13 423.60 -	14 423.61	15 423.93 -	16 424.23	17 423.60 -	18 423.70 +	19 423.60 -	20 423.61	21 423.93 -	22 424.23	23 423.60 -	24 423.70 +	25 423.60 -	26 423.62	27 423.94	28 424.25	29 423.60 -	30 423.62	31 423.94	32 424.26						
m ü.M.	16 423.51	17 423.71	18 423.77 +	19 423.66	20 423.57	21 423.50 -	22 423.65	23 423.70 +	24 423.60 -	25 423.62	26 423.94	27 424.25	28 423.51	29 423.72	30 423.77 +	31 423.66	32 423.57	33 423.50 -	34 423.65	35 423.68	36 423.60 -	37 423.63	38 423.93 -	39 424.26	40 423.52	41 423.72	42 423.76	43 423.65	44 423.56	45 423.50 -	46 423.66	47 423.68	48 423.60 -	49 423.64	50 423.98	51 424.28		
	11 423.54	12 423.73	13 423.75	14 423.85	15 423.55	16 423.52	17 423.86	18 423.68	19 423.60 -	20 423.64	21 423.99	22 424.28	23 423.59	24 423.74	25 423.75	26 423.64	27 423.55	28 423.52	29 423.50 -	30 423.65	31 423.68	32 423.60 -	33 423.63	34 423.93 -	35 424.26	36 423.52	37 423.72	38 423.76	39 423.65	40 423.56	41 423.50 -	42 423.66	43 423.68	44 423.60 -	45 423.64	46 423.98	47 424.28	
	14 423.58	15 423.75	16 423.74	17 423.84	18 423.56	19 423.51	20 423.67	21 423.68	22 423.60 -	23 423.70	24 424.01	25 424.32	26 423.59	27 423.75	28 423.74	29 423.63	30 423.56	31 423.52	32 423.67	33 423.68	34 423.60 -	35 423.73	36 424.03	37 424.32	38 423.60 -	39 423.75	40 423.74	41 423.63	42 423.56	43 423.52	44 423.67	45 423.68	46 423.60 -	47 423.73	48 424.03	49 424.32		
	16 423.60	17 423.75	18 423.74	19 423.82	20 423.55	21 423.54	22 423.66	23 423.66	24 423.60 -	25 423.75	26 424.05	27 424.33	28 423.60	29 423.75	30 423.74	31 423.63	32 423.56	33 423.54	34 423.68	35 423.66	36 423.60 -	37 423.77	38 424.07	39 424.33	40 423.60	41 423.75	42 423.74	43 423.63	44 423.54	45 423.60 -	46 423.66	47 423.66	48 423.60 -	49 423.77	50 424.07	51 424.33		
	18 423.61	19 423.76	20 423.74	21 423.83	22 423.55	23 423.56	24 423.69	25 423.65	26 423.60 -	27 423.78	28 424.08	29 424.34	30 423.61	31 423.76	32 423.72	33 423.63	34 423.55	35 423.57	36 423.69	37 423.65	38 423.60 -	39 423.80	40 424.10	41 424.34	42 423.63	43 423.75	44 423.71	45 423.62	46 423.55	47 423.58	48 423.69	49 423.65	50 423.60 -	51 423.81	52 424.11	53 424.36		
	21 423.64	22 423.75	23 423.71	24 423.61	25 423.55	26 423.59	27 423.69	28 423.65	29 423.60 -	30 423.82	31 424.12	32 424.38	33 423.64	34 423.76	35 423.71	36 423.60	37 423.54	38 423.59	39 423.69	40 423.64	41 423.60 -	42 423.83	43 424.13	44 424.39	45 423.65	46 423.76	47 423.71	48 423.61	49 423.54	50 423.59	51 423.69	52 423.64	53 423.60 -	54 423.83	55 424.13	56 424.39		
	23 423.65	24 423.76	25 423.71	26 423.60	27 423.53	28 423.59	29 423.69	30 423.64	31 423.60 -	32 423.84	33 424.14	34 424.41	35 423.66	36 423.75	37 423.74	38 423.63	39 423.56	40 423.60	41 423.70 +	42 423.64	43 423.60 -	44 423.85	45 424.16	46 424.43	47 423.65	48 423.76	49 423.71	50 423.61	51 423.52	52 423.60	53 423.52	54 423.61	55 423.70 +	56 423.64	57 423.60 -	58 423.86	59 424.17	60 424.46
+ Maximum	26 423.66	27 423.77 +	28 423.69 -	29 423.59	30 423.52	31 423.61	32 423.70 +	33 423.63	34 423.60 -	35 423.88	36 424.18	37 424.48	38 423.67	39 423.77 +	40 423.69 -	41 423.59	42 423.52	43 423.60	44 423.70 +	45 423.62	46 423.60 -	47 423.89	48 424.21	49 424.53	50 423.68	51 423.77 +	52 423.69 -	53 423.59	54 423.52	55 423.63	56 423.70 +	57 423.61	58 423.60 -	59 423.88	60 424.18	61 424.48		
- Minimum	28 423.67	29 423.77 +	30 423.69 -	31 423.59	32 423.52	33 423.63	34 423.70 +	35 423.62	36 423.60 -	37 423.89	38 424.21	39 424.53	40 423.68	41 423.77 +	42 423.69 -	43 423.59	44 423.52	45 423.60	46 423.70 +	47 423.61	48 423.60 -	49 423.89	50 424.21	51 424.53	52 423.68	53 423.77 +	54 423.69 -	55 423.59	56 423.52	57 423.63	58 423.70 +	59 423.61	60 423.60 -	61 423.88	62 424.21	63 424.53		
	30 423.68	31 423.77 +	32 423.69 -	33 423.59	34 423.52	35 423.63	36 423.70 +	37 423.61	38 423.60 -	39 423.88	40 424.22 +	41 424.56	42 423.68	43 423.77 +	44 423.69 -	45 423.59	46 423.52	47 423.60	48 423.70 +	49 423.61	50 423.60 -	51 423.88	52 424.22 +	53 424.56	54 423.68	55 423.77 +	56 423.69 -	57 423.59	58 423.52	59 423.63	60 423.70 +	61 423.61	62 423.60 -	63 423.88	64 424.22 +	65 424.56		
	31 423.69 +		423.69 -	423.58 -	423.51 -	423.64 +	423.70 +	423.61 -	423.60 -	423.90	424.22 +	424.58	423.69 +																									
Monatsmittel	423.59	423.74	423.73	423.63	423.55 -	423.55 -	423.67	423.66	423.60	423.74	424.05	424.36 +	m ü.M.																									
Spitze Datum	423.70 31.	423.77 19.	423.78 1.	423.69 1.	423.59 - 4.	423.64 30.	423.70 23.	423.70 1.	423.60 1.	423.92 31.	424.23 29.	424.62 + 31.	m ü.M.																									
Amplitude	0.23	0.08	0.09	0.11	0.08	0.15	0.07	0.10	0.00 -	0.32	0.31	0.40 +	m																									
Jahr	Mittel: 423.74												Spitze: 424.62 (31.12.2012)			Minimum: 423.47 (01.01.2012)			Amplitude: 1.15																			



Periode	2009 - 2012 (3 Jahre)																				
Monatsmittel	423.81	423.93 +	423.91	423.80	423.68	423.64 -	423.68	423.66	423.68	423.75	423.77	423.83	m ü.M.								
Monats-Spitze Jahr	424.39 2011	424.45 2011	424.38 2011	424.26 2011	424.11 2011	423.91 2011	423.81 - 2010	423.85 2010	423.93 2010	424.02 2010	424.23 2012	424.62 + 2012	m ü.M.								
Monats-Minimum Jahr	423.47 2010	423.60 2010	423.64 + 2010	423.53 2010	423.45 2010	423.49 2010	423.55 2011	423.52 2011	423.50 2011	423.51 2011	423.43 2009	423.38 - 2009	m ü.M.								
Monats-Amplitude Jahr	0.24 2011	0.08 - 2010	0.13 2011	0.15 2011	0.21 2011	0.21 2011	0.14 2010	0.10 2010	0.08 - 2010	0.32 2012	0.31 2012	0.40 + 2012	m ü.M.								
Periode	Mittel: 423.76												Spitze: 424.62 (31.12.2012)			Minimum: 423.38 (08.12.2009)			Amplitude: 1.24		



Grundwasserstände

Nr. 6223

Hatwil 2/09 - Cham

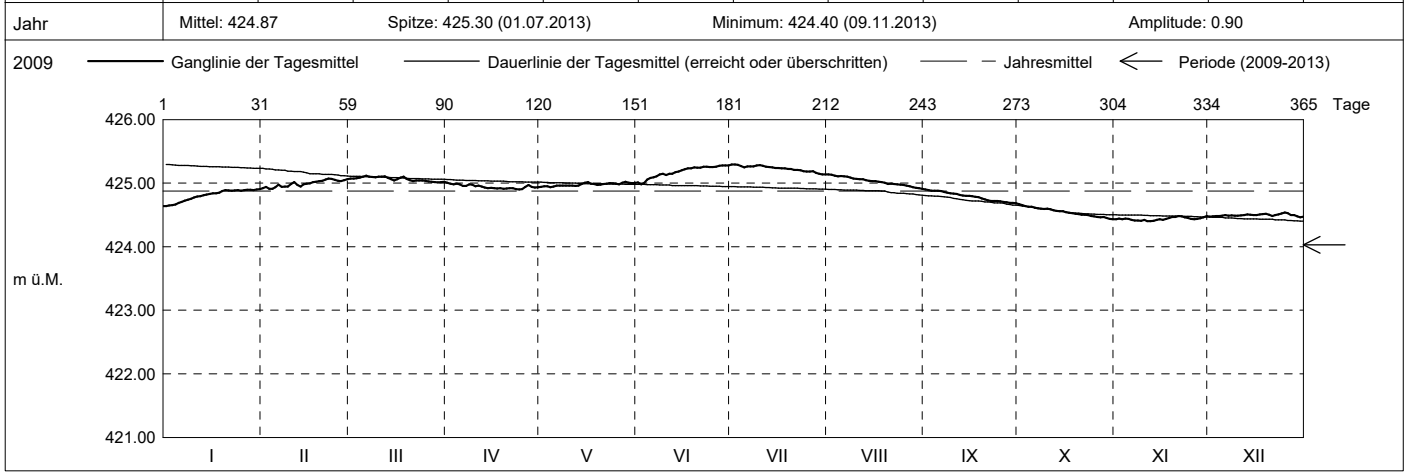
KANTON ZUG

Koordinaten: 2'675'854' / 1'230'065'

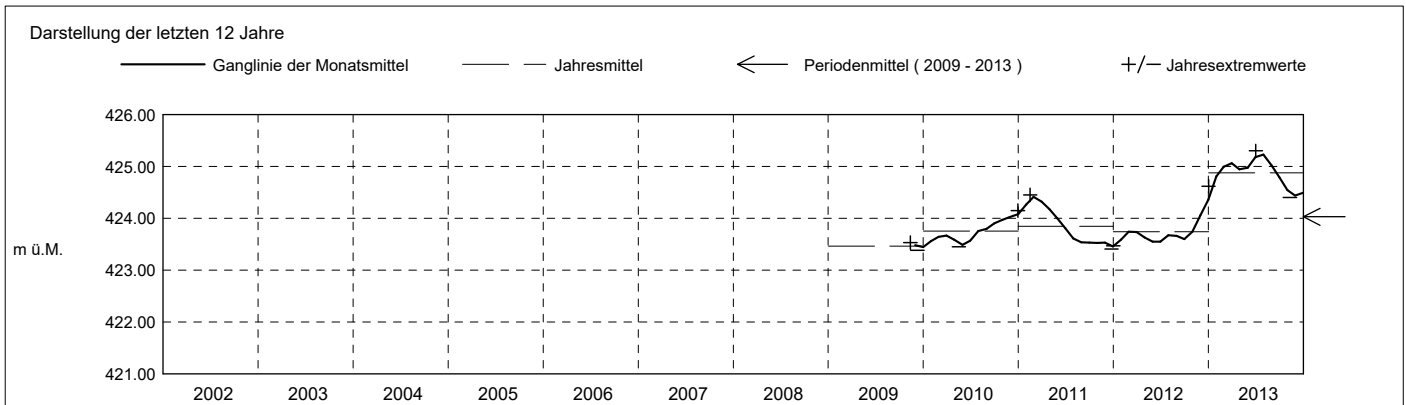
Amt für Umwelt

Abstichpunkt: 443.13 m ü.M. OK Terrain: 443.43 m ü.M.

2013	janvier	février	mars	avril	mai	juin	juillet	août	septembre	octobre	novembre	décembre	
Tagesmittel	1 424.64 -	424.92	425.07	425.00 +	424.94 -	425.01	425.29 +	425.14 +	424.90 +	424.67 +	424.43	424.47	1
	2 424.65	424.94	425.07	424.99	424.95	424.98 -	425.29 +	425.13	424.89	424.65	424.44	424.48	2
	3 424.65	424.91 -	425.08	424.98	424.95	425.00	425.29 +	425.12	424.88	424.64	424.43	424.48	3
	4 424.67	424.91 -	425.09	424.99	424.94 -	425.06	425.27	425.11	424.88	424.63	424.44	424.48	4
	5 424.69	424.94	425.10	424.98	424.95	425.08	425.25	425.11	424.88	424.63	424.44	424.49	5
	6 424.71	424.97	425.12 +	424.95	424.96	425.09	425.26	425.10	424.88	424.61	424.42	424.50	6
	7 424.72	424.94	425.10	424.96	424.96	425.11	425.26	425.10	424.86	424.60	424.41	424.49	7
	8 424.74	424.94	425.10	424.98	424.96	425.14	425.27	425.09	424.85	424.60	424.41	424.49	8
	9 424.76	424.95	425.09	424.98	424.96	425.15	425.28	425.07	424.84	424.59	424.41	424.49	9
	10 424.78	424.99	425.10	424.95	424.96	425.13	425.29 +	425.07	424.84	424.60	424.42	424.49	10
	11 424.79	425.02	425.10	424.96	424.96	425.15	425.27	425.06	424.83	424.59	424.40 -	424.49	11
	12 424.79	424.97	425.11	424.95	424.95	425.15	425.26	425.06	424.82	424.57	424.40 -	424.50	12
	13 424.81	424.94	425.08	424.93	424.96	425.17	425.25	425.04	424.80	424.56	424.41	424.51	13
	14 424.82	424.98	425.06	424.92	424.99	425.18	425.25	425.04	424.80	424.56	424.42	424.50	14
m ü.M.	15 424.83	424.99	425.04	424.92	425.00	425.20	425.24	425.03	424.80	424.56	424.43	424.50	15
	16 424.84	424.99	425.06	424.92	425.02 +	425.22	425.24	425.03	424.80	424.54	424.42	424.50	16
	17 424.84	425.02	425.09	424.92	424.99	425.23	425.23	425.02	424.78	424.53	424.43	424.51	17
	18 424.85	425.02	425.10	424.92	424.99	425.23	425.23	425.02	424.78	424.53	424.45	424.51	18
	19 424.87	425.03	425.07	424.91	424.97	425.25	425.22	425.01	424.76	424.52	424.47	424.52	19
	20 424.89	425.04	425.05	424.92	424.97	425.24	425.22	424.99	424.74	424.51	424.47	424.50	20
	21 424.89	425.06	425.03	424.92	424.99	425.24	425.21	424.99	424.73	424.50	424.48 +	424.48	21
	22 424.88	425.07 +	425.04	424.92	424.99	425.26	425.21	424.99	424.72	424.50	424.48 +	424.50	22
	23 424.89	425.07 +	425.04	424.90 -	425.00	425.26	425.20	424.98	424.72	424.50	424.46	424.51	23
	24 424.89	425.05	425.04	424.90 -	424.99	425.25	425.19	424.98	424.72	424.48	424.45	424.52	24
	25 424.88	425.04	425.03	424.90 -	424.99	425.25	425.18	424.97	424.71	424.48	424.44	424.54 +	25
+ Maximum	26 424.89	425.03	425.03	424.94	424.98	425.26	425.18	424.96	424.70	424.47	424.43	424.53	26
	27 424.90 +	425.04	425.02	424.97	424.95	425.25	425.19	424.95	424.70	424.46	424.43	424.50	27
- Minimum	28 424.90 +	425.06	425.02	424.94	425.02 +	425.28 +	425.17	424.94	424.69	424.47	424.45	424.50	28
	29 424.89	425.01 -	425.01 -	424.93	425.01	425.28 +	425.15	424.92	424.69	424.45	424.46	424.48	29
	30 424.90 +	425.02	425.02	424.94	425.00	425.28 +	425.14 -	424.92	424.68 -	424.44	424.48 +	424.46 -	30
	31 424.90 +	425.02	425.02	424.94	425.00	425.28 +	425.14 -	424.91 -	424.68 -	424.43 -	424.48 +	424.47	31
Monatsmittel	424.81	424.99	425.06	424.94	424.98	425.18	425.23 +	425.03	424.79	424.54	424.44 -	424.50	m ü.M.
Spitze Datum	424.91 27.	425.08 22.	425.13 6.	425.01 1.	425.04 28.	425.29 28.	425.30 + 1.	425.14 1.	424.90 1.	424.67 1.	424.48 - 21.	424.54 25.	m ü.M.
Amplitude	0.28	0.18	0.12	0.11	0.11	0.32 +	0.17	0.24	0.23	0.24	0.08 -	0.08 -	m
Jahr	Mittel: 424.87 Spitze: 425.30 (01.07.2013) Minimum: 424.40 (09.11.2013) Amplitude: 0.90												



Periode	2009 - 2013 (4 Jahre)												
Monatsmittel	424.06	424.20 +	424.20 +	424.09	424.00	424.03	424.07	424.01	423.96	423.95	423.91 -	423.97	m ü.M.
Monats-Spitze Jahr	424.91 2013	425.08 2013	425.13 2013	425.01 2013	425.04 2013	425.29 2013	425.30 + 2013	425.14 2013	424.90 2013	424.67 2013	424.48 - 2013	424.62 2012	m ü.M.
Monats-Minimum Jahr	423.47 2010	423.60 2010	423.64 + 2010	423.53 2010	423.45 2010	423.49 2010	423.55 2011	423.52 2011	423.50 2011	423.51 2011	423.43 2009	423.38 - 2009	m ü.M.
Monats-Amplitude Jahr	0.28 2013	0.18 2013	0.13 - 2011	0.15 2011	0.21 2011	0.32 2013	0.17 2013	0.24 2013	0.23 2013	0.32 2012	0.31 2012	0.40 + 2012	m ü.M.
Periode	Mittel: 424.03 Spitze: 425.30 (01.07.2013) Minimum: 423.38 (08.12.2009) Amplitude: 1.92												



Grundwasserstände

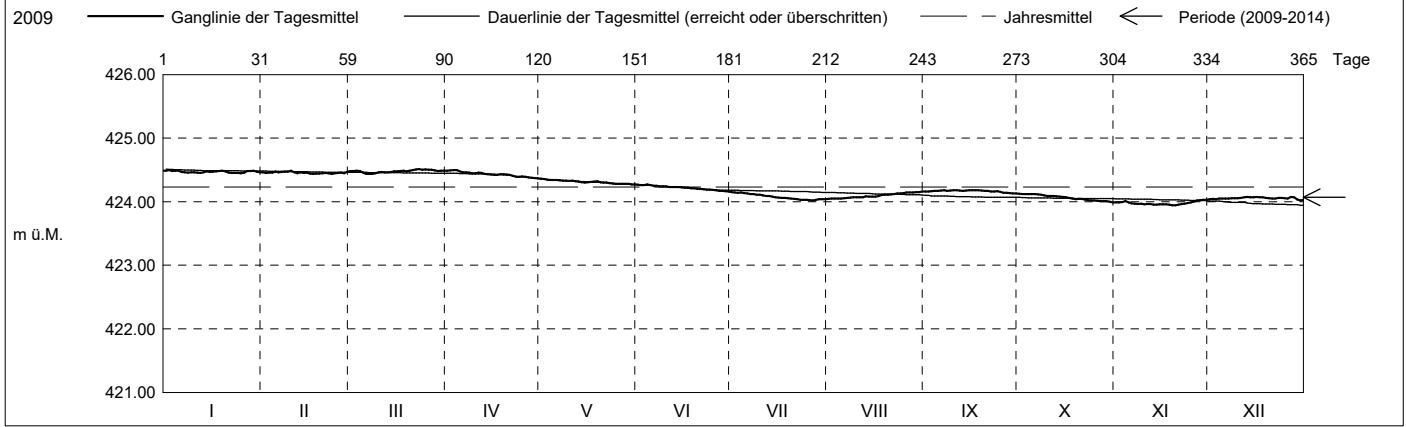
Nr. 6223 Hatwil 2/09 - Cham
 Koordinaten: 2'675'854' / 1'230'065'

KANTON ZUG
 Amt für Umwelt

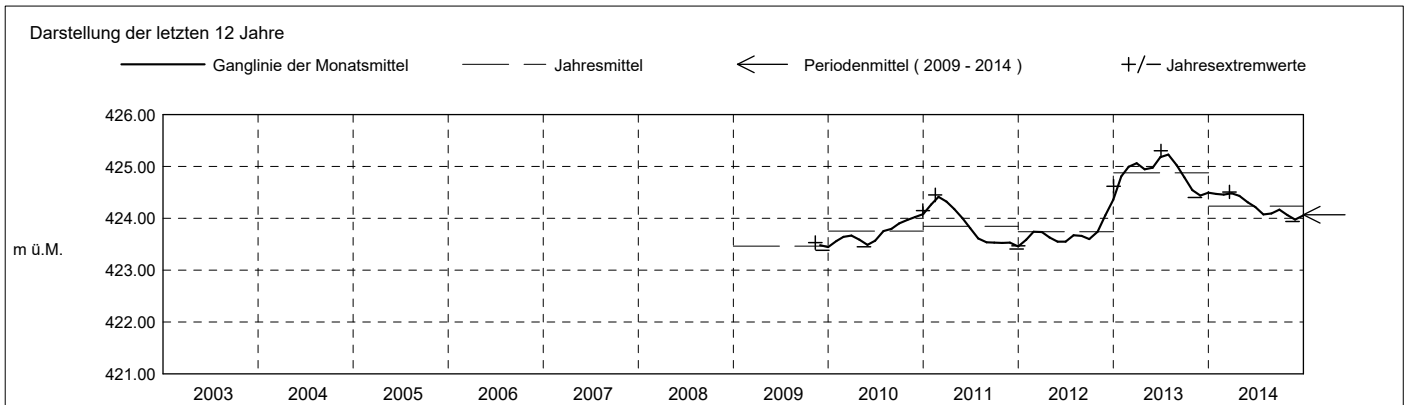
Abstichpunkt: 443.13 m ü.M. OK Terrain: 443.43 m ü.M.

2014	janvier	février	mars	avril	mai	juin	juillet	août	septembre	octobre	novembre	décembre		
Tagesmittel	1	424.48	424.46	424.48	424.49	424.36 +	424.27 +	424.15 +	424.04 -	424.16	424.12 +	423.99	424.04	1
	2	424.50 +	424.45	424.48	424.49	424.36 +	424.26	424.15 +	424.05	424.16	424.12 +	423.99	424.04	2
	3	424.48	424.46	424.49	424.50 +	424.35	424.26	424.14	424.05	424.16	424.12 +	423.99	424.04	3
	4	424.49	424.46	424.48	424.50 +	424.34	424.27 +	424.15 +	424.05	424.17	424.12 +	424.01	424.05	4
	5	424.47	424.47	424.46	424.48	424.34	424.26	424.13	424.05	424.17	424.12 +	423.99	424.05	5
	6	424.47	424.46	424.44 -	424.46	424.34	424.25	424.13	424.05	424.17	424.12 +	423.97	424.05	6
	7	424.46	424.47	424.44 -	424.46	424.34	424.25	424.12	424.06	424.18 +	424.11	423.97	424.05	7
	8	424.46	424.47	424.44 -	424.46	424.33	424.24	424.12	424.07	424.17	424.11	423.96	424.05	8
	9	424.46	424.47	424.44 -	424.44	424.33	424.24	424.11	424.07	424.17	424.10	423.97	424.05	9
	10	424.46	424.48 +	424.46	424.45	424.33	424.24	424.11	424.07	424.18 +	424.09	423.96	424.05	10
m ü.M.	11	424.46	424.46	424.47	424.46	424.33	424.23	424.10	424.07	424.18 +	424.09	423.96	424.06	11
	12	424.45 -	424.45	424.46	424.45	424.32	424.23	424.09	424.07	424.18 +	424.09	423.97	424.07	12
	13	424.46	424.46	424.46	424.44	424.32	424.23	424.09	424.08	424.17	424.08	423.95	424.07	13
	14	424.48	424.45	424.47	424.43	424.30	424.23	424.08	424.08	424.18 +	424.08	423.95	424.07	14
	15	424.47	424.46	424.48	424.43	424.30	424.22	424.07	424.08	424.18 +	424.08	423.96	424.07	15
	16	424.47	424.44 -	424.48	424.42	424.30	424.22	424.06	424.08	424.18 +	424.07	423.96	424.08 +	16
	17	424.48	424.44 -	424.48	424.42	424.31	424.22	424.06	424.09	424.18 +	424.06	423.96	424.07	17
	18	424.48	424.44 -	424.49	424.43	424.31	424.21	424.06	424.10	424.18 +	424.05	423.95	424.07	18
	19	424.49	424.44 -	424.48	424.43	424.32	424.21	424.05	424.11	424.17	424.04	423.95	424.06	19
	20	424.48	424.45	424.48	424.43	424.30	424.20	424.05	424.11	424.17	424.04	423.94 -	424.06	20
+ Maximum	21	424.46	424.45	424.50	424.42	424.30	424.20	424.04	424.11	424.17	424.04	423.95	424.05	21
	22	424.45 -	424.44 -	424.51 +	424.40	424.30	424.20	424.04	424.16	424.03	424.03	423.96	424.05	22
	23	424.45 -	424.44 -	424.51 +	424.39	424.29	424.19	424.03	424.13	424.16	424.02	423.97	424.06	23
	24	424.45 -	424.45	424.50	424.39	424.29	424.19	424.03	424.13	424.16	424.02	423.98	424.06	24
	25	424.45 -	424.45	424.51 +	424.40	424.28	424.19	424.03	424.13	424.15	424.02	423.99	424.06	25
	26	424.46	424.46	424.50	424.39	424.28	424.18	424.02 -	424.15	424.14	424.01	424.00	424.05	26
	27	424.48	424.45	424.50	424.38	424.28	424.17	424.02 -	424.14	424.14	424.01	424.02	424.07	27
	28	424.48	424.47	424.49	424.38	424.28	424.17	424.03	424.15	424.13 -	424.01	424.02	424.07	28
	29	424.49	424.48	424.48	424.37 -	424.28	424.17	424.04	424.15	424.13 -	424.01	424.03 +	424.03	29
	30	424.47	424.48	424.48	424.37 -	424.27 -	424.16 -	424.04	424.15	424.13 -	424.00	424.03 +	424.02 -	30
31	424.46	424.49	424.49	424.27 -	424.27 -	424.16 -	424.04	424.16 +	424.13 -	423.99 -	424.03	424.03	31	
Monatsmittel	424.47	424.46	424.48 +	424.43	424.31	424.22	424.08	424.10	424.17	424.06	423.98 -	424.05	m ü.M.	
Spitze Datum	424.50 2.	424.49 10.	424.51 + 22.	424.50 2.	424.36 1.	424.27 1.	424.15 1.	424.16 31.	424.18 6.	424.13 1.	424.04 - 30.	424.08 13.	m ü.M.	
Amplitude	0.06	0.06	0.08	0.14 +	0.10	0.12	0.13	0.12	0.05 -	0.14 +	0.10	0.06	m	

Jahr Mittel: 424.23 Spitze: 424.51 (22.03.2014) Minimum: 423.94 (19.11.2014) Amplitude: 0.57



Periode	2009 - 2014 (5 Jahre)												
Monatsmittel	424.14	424.25 +	424.25 +	424.16	424.06	424.06	424.07	424.02	424.00	423.97	423.92 -	423.98	m ü.M.
Monats-Spitze Jahr	424.91 2013	425.08 2013	425.13 2013	425.01 2013	425.04 2013	425.29 2013	425.30 + 2013	425.14 2013	424.90 2013	424.67 2013	424.48 - 2013	424.62 2012	m ü.M.
Monats-Minimum Jahr	423.47 2010	423.60 2010	423.64 + 2010	423.53 2010	423.45 2010	423.49 2010	423.55 2011	423.52 2011	423.50 2011	423.51 2011	423.43 2009	423.38 - 2009	m ü.M.
Monats-Amplitude Jahr	0.28 2013	0.18 2013	0.13 - 2011	0.15 2011	0.21 2011	0.32 2013	0.17 2013	0.24 2013	0.23 2013	0.32 2012	0.31 2012	0.40 + 2012	m ü.M.
Periode	Mittel: 424.07 Spitze: 425.30 (01.07.2013) Minimum: 423.38 (08.12.2009) Amplitude: 1.92												



Grundwasserstände

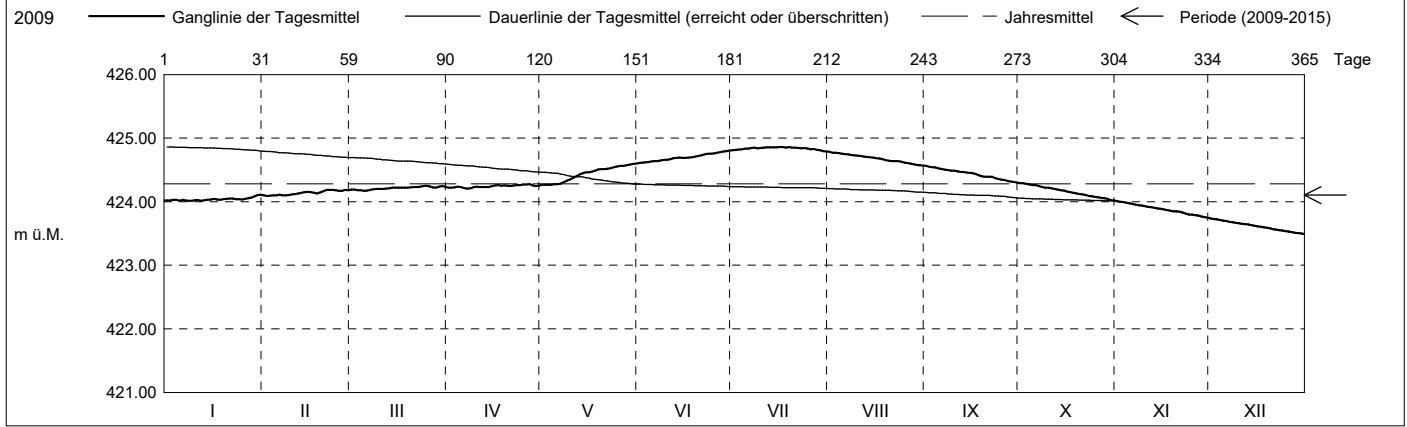
Nr. 6223 Hatwil 2/09 - Cham
 Koordinaten: 2'675'854' / 1'230'065'

KANTON ZUG
 Amt für Umwelt

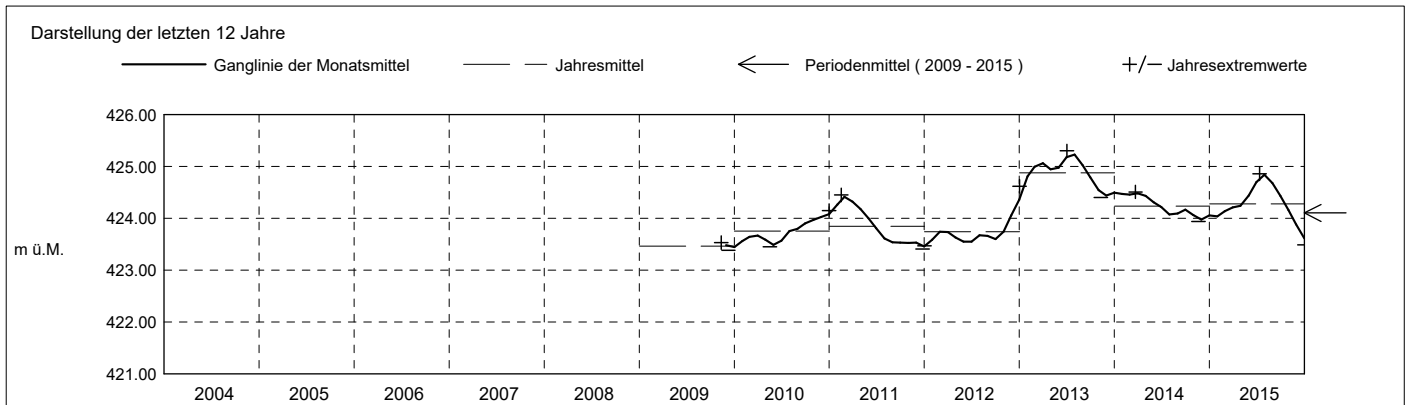
Abstichpunkt: 443.13 m ü.M. OK Terrain: 443.43 m ü.M.

2015	janvier	février	mars	avril	mai	juin	juillet	août	septembre	octobre	novembre	décembre	
Tagesmittel	1 424.02	2 424.10	3 424.19	4 424.22	5 424.27	6 424.61 -	7 424.81	8 424.78 +	9 424.56 +	10 424.29 +	11 424.01 +	12 423.74 +	13 423.72
	14 424.03	15 424.10	16 424.18	17 424.22	18 424.27	19 424.62	20 424.82	21 424.77	22 424.54	23 424.28	24 423.99	25 423.72	26 423.73
	27 424.03	28 424.10	29 424.18	30 424.24	31 424.27	1 424.63	2 424.83	3 424.75	4 424.52	5 424.26	6 423.98	7 423.70	8 423.71
	9 424.02	10 424.10	11 424.17 -	12 424.23	13 424.27	14 424.63	15 424.83	16 424.75	17 424.52	18 424.26	19 423.98	20 423.70	21 423.71
	22 424.03	23 424.11	24 424.17 -	25 424.22	26 424.28	27 424.64	28 424.83	29 424.75	30 424.51	31 424.26	1 423.96	2 423.69	3 423.68
	4 424.02	5 424.10	6 424.18	7 424.21 -	8 424.29	9 424.64	10 424.85	11 424.74	12 424.50	13 424.24	14 423.96	15 423.68	16 423.68
	17 424.01 -	18 424.10	19 424.20	20 424.21 -	21 424.31	22 424.65	23 424.85	24 424.73	25 424.50	26 424.23	27 423.95	28 423.68	29 423.67
	30 424.01 -	31 424.10	1 424.20	2 424.22	3 424.33	4 424.66	5 424.84	6 424.73	7 424.49	8 424.22	9 423.94	10 423.67	11 423.66
	12 424.02	13 424.11	14 424.20	15 424.23	16 424.35	17 424.66	18 424.85	19 424.72	20 424.49	21 424.22	22 423.93	23 423.66	24 423.66
m ü.M.	25 424.03	26 424.12	27 424.20	28 424.23	29 424.38	30 424.67	31 424.85	1 424.72	2 424.48	3 424.21	4 423.92	5 423.65	6 423.65
	7 424.01 -	8 424.13	9 424.21	10 424.23	11 424.40	12 424.68	13 424.85	14 424.71	15 424.47	16 424.20	17 423.91	18 423.65	19 423.65
	13 424.03	14 424.14	15 424.21	16 424.23	17 424.43	18 424.69	19 424.85	20 424.71	21 424.47	22 424.19	23 423.90	24 423.64	25 423.64
	14 424.03	15 424.15	16 424.22	17 424.23	18 424.45	19 424.69	20 424.85	21 424.70	22 424.46	23 424.18	24 423.89	25 423.63	26 423.63
	15 424.04	16 424.16	17 424.22	18 424.25	19 424.46	20 424.69	21 424.85	22 424.70	23 424.45	24 424.17	25 423.89	26 423.62	27 423.62
	16 424.04	17 424.15	18 424.22	19 424.26	20 424.46	21 424.69	22 424.86 +	23 424.68	24 424.45	25 424.16	26 423.88	27 423.61	28 423.61
	17 424.03	18 424.14	19 424.22	20 424.26	21 424.47	22 424.69	23 424.86 +	24 424.68	25 424.43	26 424.15	27 423.87	28 423.60	29 423.60
	18 424.03	19 424.13	20 424.22	21 424.25	22 424.49	23 424.70	24 424.85	25 424.67	26 424.41	27 424.14	28 423.86	29 423.60	30 423.60
	19 424.04	20 424.15	21 424.22	22 424.26	23 424.51	24 424.71	25 424.86 +	26 424.65	27 424.40	28 424.13	29 423.85	30 423.59	31 423.59
	20 424.04	21 424.16	22 424.23	23 424.25	24 424.51	25 424.72	26 424.85	27 424.64	28 424.39	29 424.12	30 423.85	31 423.58	32 423.58
	21 424.05	22 424.18	23 424.23	24 424.25	25 424.51	26 424.73	27 424.85	28 424.64	29 424.39	30 424.11	31 423.84	32 423.57	33 423.57
	22 424.05	23 424.18	24 424.23	25 424.25	26 424.51	27 424.73	28 424.85	29 424.64	30 424.39	31 424.11	32 423.84	33 423.57	34 423.57
	23 424.04	24 424.19 +	25 424.23	26 424.26	27 424.53	28 424.76	29 424.84	30 424.64	31 424.37	32 424.09	33 423.81	34 423.55	35 423.55
	24 424.04	25 424.18	26 424.24	27 424.26	28 424.54	29 424.75	30 424.84	31 424.63	32 424.36	33 424.09	34 423.80	35 423.54	36 423.54
+ Maximum	26 424.04	27 424.17	28 424.25 +	29 424.27	30 424.55	31 424.76	1 424.83	2 424.61	3 424.34	4 424.07	5 423.80	6 423.54	7 423.54
- Minimum	26 424.04	27 424.17	28 424.25 +	29 424.27	30 424.55	31 424.76	1 424.83	2 424.61	3 424.34	4 424.07	5 423.80	6 423.54	7 423.54
	27 424.05	28 424.19 +	29 424.22	30 424.28 +	31 424.56	1 424.77	2 424.83	3 424.61	4 424.34	5 424.06	6 423.79	7 423.53	8 423.53
	28 424.06	29 424.18	30 424.22	31 424.25	1 424.57	2 424.79	3 424.82	4 424.59	5 424.31	6 424.06	7 423.77	8 423.51	9 423.51
	29 424.09	30 424.18	31 424.23	1 424.24	2 424.59	3 424.79	4 424.81	5 424.58	6 424.31	7 424.04	8 423.76	9 423.51	10 423.51
	30 424.11 +	31 424.18	1 424.23	2 424.24	3 424.59	4 424.79	5 424.81	6 424.58	7 424.31	8 424.04	9 423.76	10 423.51	11 423.51
	31 424.11 +	1 424.18	2 424.23	3 424.24	4 424.59	5 424.79	6 424.81	7 424.58	8 424.31	9 424.04	10 423.76	11 423.51	12 423.51
Monatsmittel	424.04	424.14	424.21	424.24	424.44	424.70	424.84 +	424.68	424.44	424.16	423.88	423.61 -	m ü.M.
Spitze Datum	424.11 30.	424.19 21.	424.25 24.	424.28 27.	424.60 30.	424.81 30.	424.86 + 12.	424.79 1.	424.57 1.	424.30 1.	424.01 1.	423.74 - 1.	m ü.M.
Amplitude	0.10	0.10	0.08	0.08	0.34 +	0.21	0.07 -	0.22	0.27	0.29	0.27	0.25	m

Jahr Mittel: 424.28 Spitze: 424.86 (12.07.2015) Minimum: 423.49 (31.12.2015) Amplitude: 1.37



Periode	2009 - 2015 (6 Jahre)												
Monatsmittel	424.12	424.23	424.25 +	424.17	424.13	424.17	424.20	424.13	424.07	424.00	423.91 -	423.93	m ü.M.
Monats-Spitze Jahr	424.91 2013	425.08 2013	425.13 2013	425.01 2013	425.04 2013	425.29 2013	425.30 + 2013	425.14 2013	424.90 2013	424.67 2013	424.48 - 2013	424.62 2012	m ü.M.
Monats-Minimum Jahr	423.47 2010	423.60 2010	423.64 + 2010	423.53 2010	423.45 2010	423.49 2010	423.55 2011	423.52 2011	423.50 2011	423.51 2011	423.43 2009	423.38 - 2009	m ü.M.
Monats-Amplitude Jahr	0.28 2013	0.18 2013	0.13 - 2011	0.15 2011	0.34 2015	0.32 2013	0.17 2013	0.24 2013	0.27 2015	0.32 2012	0.31 2012	0.40 + 2012	m ü.M.
Periode	Mittel: 424.10	Spitze: 425.30 (01.07.2013)					Minimum: 423.38 (08.12.2009)			Amplitude: 1.92			



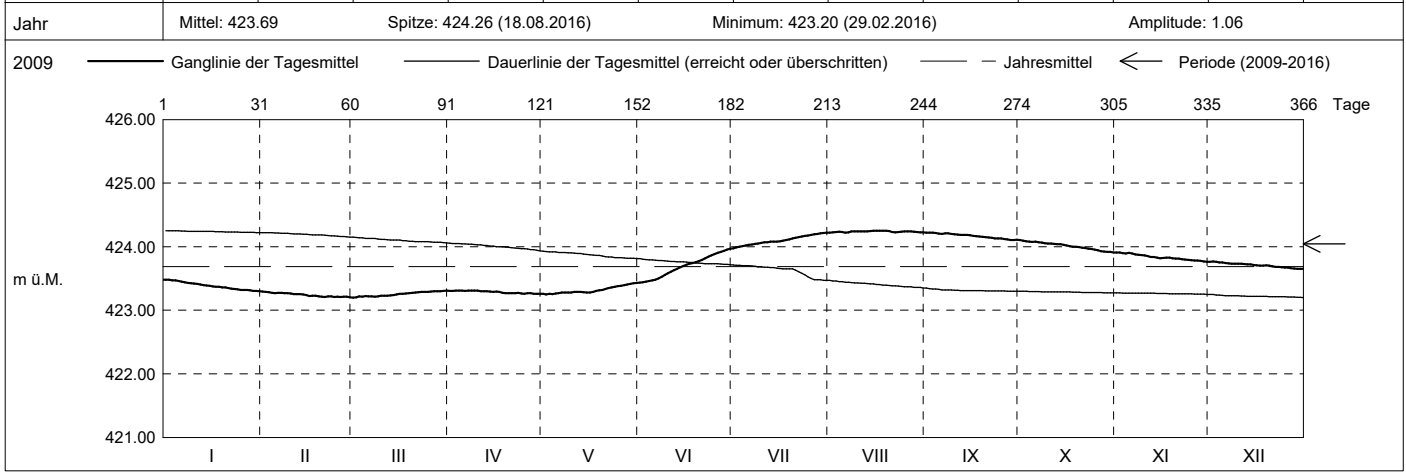
Grundwasserstände

Nr. 6223 Hatwil 2/09 - Cham
 Koordinaten: 2'675'854' / 1'230'065'

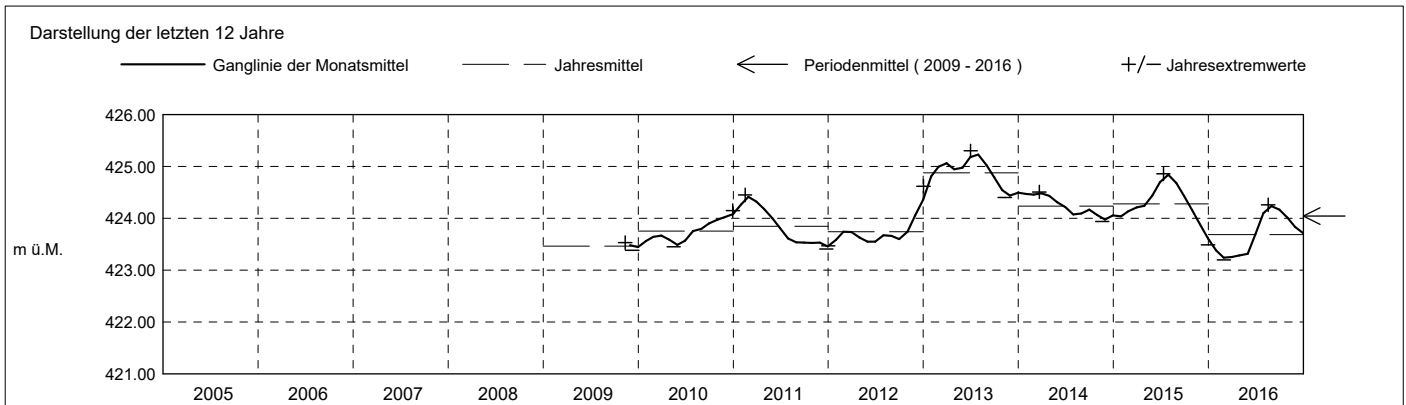
KANTON ZUG
 Amt für Umwelt

Abstichpunkt: 443.13 m ü.M. OK Terrain: 443.43 m ü.M.

2016	janvier	février	mars	avril	mai	juin	juillet	août	septembre	octobre	novembre	décembre	
Tagesmittel	1 423.48 +	423.29 +	423.20 -	423.30	423.26	423.43 -	423.98 -	424.22 -	424.22 +	424.11 +	423.91 +	423.76	1
	2 423.48 +	423.29 +	423.21	423.30	423.25 -	423.44	423.99	424.23	424.22 +	424.10	423.91 +	423.77 +	2
	3 423.47	423.28	423.22	423.31 +	423.26	423.45	424.00	424.23	424.22 +	424.08	423.90	423.76	3
	4 423.47	423.27	423.22	423.31 +	423.25 -	423.46	424.01	424.24	424.22 +	424.08	423.90	423.75	4
	5 423.46	423.27	423.22	423.31 +	423.26	423.47	424.02	424.23	424.21	424.07	423.90	423.75	5
	6 423.45	423.27	423.22	423.31 +	423.27	423.48	424.03	424.22 -	424.20	424.08	423.89	423.74	6
	7 423.44	423.28	423.22	423.31 +	423.28	423.50	424.03	424.23	424.21	424.07	423.88	423.74	7
	8 423.43	423.27	423.21	423.31 +	423.28	423.53	424.05	424.24	424.21	424.06	423.87	423.73	8
	9 423.42	423.27	423.22	423.31 +	423.28	423.55	424.05	424.24	424.20	424.06	423.87	423.73	9
	10 423.42	423.26	423.23	423.31 +	423.28	423.58	424.06	424.24	424.20	424.05	423.86	423.73	10
m ü.M.	11 423.42	423.26	423.23	423.30	423.29	423.61	424.07	424.24	424.19	424.05	423.85	423.73	11
	12 423.41	423.26	423.23	423.30	423.29	423.63	424.07	424.24	424.19	424.04	423.84	423.73	12
	13 423.39	423.25	423.24	423.30	423.29	423.65	424.08	424.24	424.18	424.04	423.83	423.72	13
	14 423.39	423.25	423.24	423.29	423.28	423.68	424.08	424.25 +	424.19	424.04	423.83	423.72	14
	15 423.38	423.24	423.25	423.29	423.28	423.70	424.08	424.25 +	424.18	424.03	423.82	423.71	15
	16 423.38	423.23	423.26	423.29	423.28	423.72	424.08	424.25 +	424.17	424.02	423.82	423.71	16
	17 423.37	423.23	423.26	423.29	423.29	423.73	424.10	424.25 +	424.17	424.01	423.83	423.70	17
	18 423.37	423.23	423.27	423.28	423.30	423.74	424.11	424.25 +	424.16	424.00	423.83	423.70	18
	19 423.36	423.22	423.27	423.27	423.32	423.76	424.12	424.25 +	424.16	424.00	423.82	423.71	19
	20 423.36	423.21 -	423.27	423.27	423.32	423.77	424.13	424.24	424.15	423.99	423.81	423.70	20
+ Maximum	21 423.35	423.21 -	423.28	423.27	423.33	423.79	424.14	424.23	424.15	423.98	423.81	423.69	21
	22 423.34	423.21 -	423.29	423.27	423.35	423.82	424.15	424.23	424.14	423.98	423.80	423.68	22
	23 423.33	423.22	423.29	423.27	423.36	423.84	424.16	424.23	424.13	423.97	423.80	423.68	23
	24 423.33	423.21 -	423.29	423.27	423.37	423.86	424.17	424.24	424.13	423.96	423.79	423.68	24
	25 423.32	423.21 -	423.29	423.26 -	423.38	423.89	424.18	424.24	424.13	423.95	423.79	423.67	25
	26 423.32	423.21 -	423.29	423.27	423.39	423.90	424.18	424.24	424.12	423.94	423.78	423.67	26
	27 423.32	423.21 -	423.30	423.27	423.40	423.92	424.19	424.24	424.11	423.93	423.78	423.66	27
	28 423.31	423.21 -	423.30	423.26 -	423.40	423.93	424.20	424.23	424.10	423.92	423.78	423.66	28
	29 423.30 -	423.21 -	423.30	423.26 -	423.42	423.95	424.21	424.23	424.11	423.92	423.77	423.65 -	29
	30 423.30 -	423.21 -	423.30	423.26 -	423.42	423.97 +	424.22 +	424.23	424.11	423.92	423.76 -	423.65 -	30
31 423.30 -	423.21 -	423.31 +	423.26 -	423.43 +	423.97 +	424.22 +	424.23	424.11	423.91 -	423.76 -	423.65 -	31	
Monatsmittel	423.38	423.24 -	423.26	423.29	423.32	423.69	424.10	424.24 +	424.17	424.01	423.83	423.71	m ü.M.
Spitze Datum	423.49 1.	423.30 - 1.	423.31 28.	423.31 1.	423.43 30.	423.97 30.	424.22 30.	424.26 + 18.	424.22 1.	424.11 1.	423.91 1.	423.77 2.	m ü.M.
Amplitude	0.19	0.10	0.11	0.05	0.18	0.54 +	0.25	0.04 -	0.12	0.20	0.15	0.12	m
Jahr	Mittel: 423.69 Spitze: 424.26 (18.08.2016) Minimum: 423.20 (29.02.2016) Amplitude: 1.06												



Periode	2009 - 2016 (7 Jahre)												
Monatsmittel	424.02	424.09	424.10	424.04	424.01	424.10	424.18 +	424.15	424.08	424.00	423.90 -	423.90 -	m ü.M.
Monats-Spitze Jahr	424.91 2013	425.08 2013	425.13 2013	425.01 2013	425.04 2013	425.29 2013	425.30 + 2013	425.14 2013	424.90 2013	424.67 2013	424.48 - 2013	424.62 2012	m ü.M.
Monats-Minimum Jahr	423.30 2016	423.20 - 2016	423.20 - 2016	423.26 2016	423.25 2016	423.43 2016	423.55 + 2016	423.52 2011	423.50 2011	423.51 2011	423.43 2009	423.38 2009	m ü.M.
Monats-Amplitude Jahr	0.28 2013	0.18 2013	0.13 - 2011	0.15 2011	0.34 2015	0.54 + 2016	0.25 2016	0.24 2013	0.27 2015	0.32 2012	0.31 2012	0.40 2012	m ü.M.
Periode	Mittel: 424.05 Spitze: 425.30 (01.07.2013) Minimum: 423.20 (29.02.2016) Amplitude: 2.10												



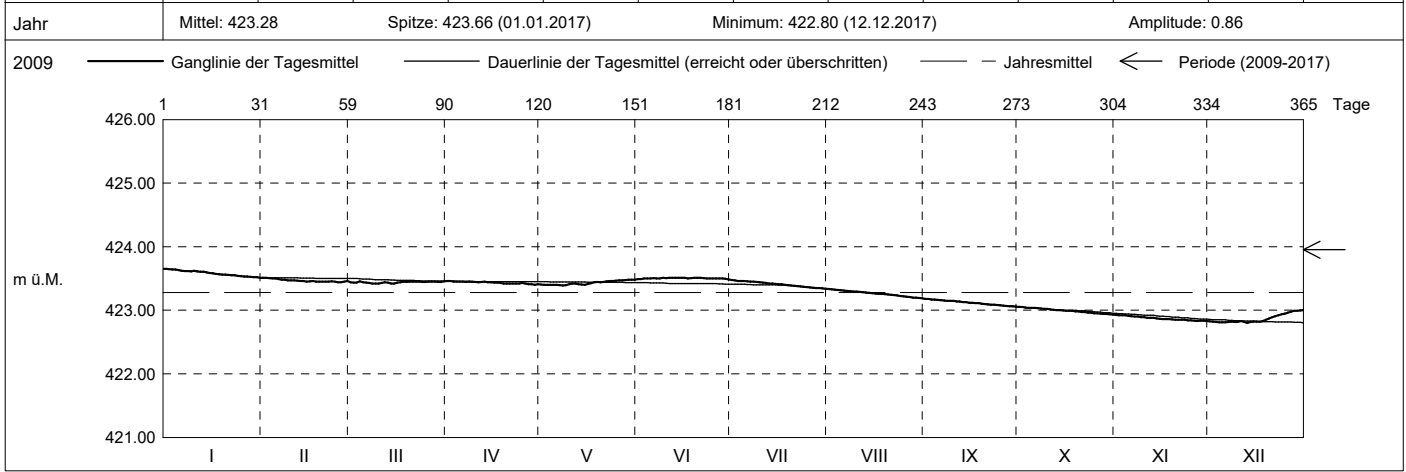
Grundwasserstände

Nr. 6223 Hatwil 2/09 - Cham
 Koordinaten: 2'675'854' / 1'230'065'

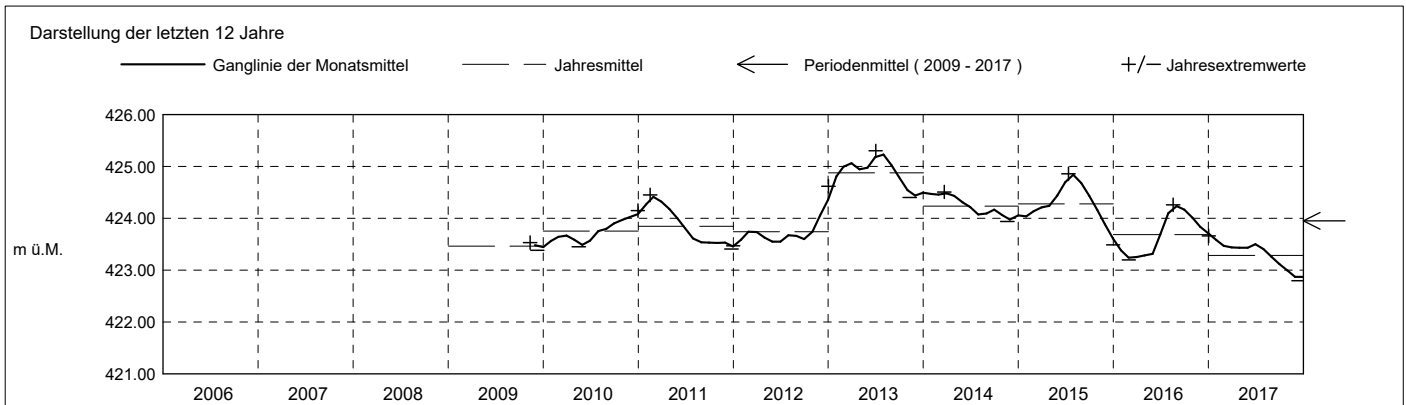
KANTON ZUG
 Amt für Umwelt

Abstichpunkt: 443.13 m ü.M. OK Terrain: 443.43 m ü.M.

2017	janvier	février	mars	avril	mai	juin	juillet	août	septembre	octobre	novembre	décembre		
Tagesmittel	1	423.65 +	423.51 +	423.44	423.46 +	423.41	423.49 -	423.48 +	423.33 +	423.18 +	423.05 +	422.93 +	422.83	1
	2	423.65 +	423.51 +	423.44	423.46 +	423.40	423.49 -	423.47	423.33 +	423.18 +	423.05 +	422.92	422.82	2
	3	423.64	423.50	423.44	423.45	423.40	423.50	423.46	423.32	423.17	423.04	422.92	422.82	3
	4	423.64	423.50	423.45 +	423.45	423.40	423.50	423.46	423.32	423.17	423.04	422.92	422.81	4
	5	423.63	423.50	423.44	423.45	423.40	423.50	423.46	423.31	423.16	423.04	422.91	422.81	5
	6	423.62	423.49	423.44	423.45	423.40	423.51 +	423.46	423.31	423.16	423.04	422.91	422.81	6
	7	423.62	423.48	423.43	423.45	423.39 -	423.50	423.45	423.31	423.16	423.03	422.90	422.81	7
	8	423.61	423.48	423.42 -	423.45	423.39 -	423.50	423.45	423.30	423.15	423.03	422.90	422.82	8
	9	423.61	423.47	423.42 -	423.45	423.39 -	423.51 +	423.45	423.30	423.15	423.02	422.89	422.81	9
	10	423.62	423.47	423.42 -	423.45	423.41	423.51 +	423.44	423.29	423.15	423.02	422.89	422.82	10
m ü.M.	11	423.61	423.47	423.43	423.44	423.42	423.51 +	423.43	423.29	423.14	423.01	422.88	422.83	11
	12	423.60	423.47	423.44	423.44	423.42	423.51 +	423.43	423.28	423.14	423.01	422.88	422.81	12
	13	423.61	423.46	423.43	423.45	423.41	423.51 +	423.42	423.28	423.13	423.00	422.88	422.80 -	13
	14	423.59	423.46	423.42 -	423.44	423.40	423.51 +	423.42	423.27	423.13	423.00	422.87	422.81	14
	15	423.58	423.45	423.42 -	423.44	423.40	423.51 +	423.41	423.27	423.12	423.00	422.87	422.82	15
	16	423.58	423.45	423.43	423.43	423.41	423.51 +	423.41	423.27	423.12	422.99	422.86	422.82	16
	17	423.57	423.46	423.44	423.43	423.42	423.50	423.41	423.26	423.11	422.99	422.86	422.82	17
	18	423.57	423.45	423.45 +	423.43	423.44	423.51 +	423.40	423.26	423.11	422.99	422.86	422.83	18
	19	423.56	423.45	423.45 +	423.42	423.45	423.51 +	423.39	423.25	423.10	422.98	422.86	422.85	19
	20	423.56	423.45	423.45 +	423.42	423.44	423.51 +	423.39	423.25	423.10	422.98	422.85	422.87	20
+ Maximum	21	423.55	423.45	423.45 +	423.42	423.45	423.51 +	423.38	423.24	423.09	422.97	422.85	422.89	21
	22	423.55	423.45	423.45 +	423.42	423.45	423.50	423.38	423.24	423.09	422.97	422.85	422.91	22
	23	423.55	423.46	423.45 +	423.42	423.46	423.50	423.38	423.23	423.09	422.96	422.85	422.92	23
	24	423.54	423.45	423.45 +	423.42	423.46	423.50	423.37	423.22	423.08	422.96	422.84	422.93	24
	25	423.54	423.44 -	423.45 +	423.43	423.46	423.50	423.37	423.22	423.08	422.95	422.84	422.95	25
	26	423.53	423.44 -	423.45 +	423.42	423.47	423.50	423.36	423.21	423.07	422.95	422.83 -	422.96	26
	27	423.53	423.45	423.45 +	423.41	423.47	423.50	423.36	423.21	423.07	422.95	422.83 -	422.98	27
	28	423.53	423.46	423.45 +	423.41	423.47	423.50	423.35	423.20	423.06 -	422.94	422.84	422.99	28
	29	423.52	423.44	423.44	423.40 -	423.48 +	423.50	423.35	423.20	423.06 -	422.94	422.84	422.99	29
	30	423.52	423.45 +	423.45 +	423.41	423.48 +	423.49 -	423.34 -	423.19 -	423.06 -	422.93 -	422.83 -	423.00 +	30
31	423.51 -	423.45 +	423.45 +	423.41	423.48 +	423.49 -	423.34 -	423.19 -	423.06 -	422.93 -	422.83 -	423.00 +	31	
Monatsmittel	423.58 +	423.47	423.44	423.43	423.43	423.50	423.41	423.26	423.12	422.99	422.87 -	422.87 -	m ü.M.	
Spitze Datum	423.66 + 1.	423.51 1.	423.46 4.	423.46 1.	423.48 28.	423.51 6.	423.48 1.	423.34 1.	423.18 1.	423.05 1.	422.93 - 1.	423.01 31.	m ü.M.	
Amplitude	0.15	0.07	0.04	0.06	0.09	0.03 -	0.14	0.16	0.13	0.12	0.10	0.21 +	m	
Jahr	Mittel: 423.28 Spitze: 423.66 (01.01.2017) Minimum: 422.80 (12.12.2017) Amplitude: 0.86													



Periode	2009 - 2017 (8 Jahre)												
Monatsmittel	423.96	424.01	424.02	423.97	423.94	424.03	424.09 +	424.04	423.96	423.88	423.79 -	423.79 -	m ü.M.
Monats-Spitze Jahr	424.91 2013	425.08 2013	425.13 2013	425.01 2013	425.04 2013	425.29 2013	425.30 + 2013	425.14 2013	424.90 2013	424.67 2013	424.48 - 2013	424.62 2012	m ü.M.
Monats-Minimum Jahr	423.30 2016	423.20 2016	423.20 2016	423.26 2016	423.25 2016	423.43 + 2016	423.34 2017	423.18 2017	423.05 2017	422.93 2017	422.83 2017	422.80 - 2017	m ü.M.
Monats-Amplitude Jahr	0.28 2013	0.18 2013	0.13 - 2011	0.15 2011	0.34 2015	0.54 + 2016	0.25 2016	0.24 2013	0.27 2015	0.32 2012	0.31 2012	0.40 2012	m ü.M.
Periode	Mittel: 423.95 Spitze: 425.30 (01.07.2013) Minimum: 422.80 (12.12.2017) Amplitude: 2.50												



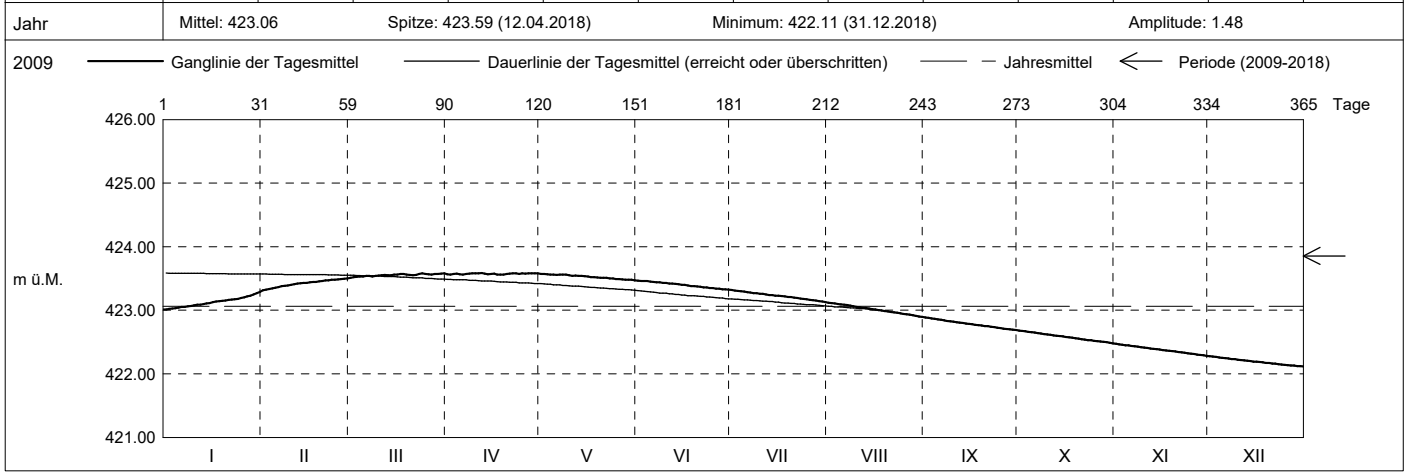
Grundwasserstände

Nr. 6223 Hatwil 2/09 - Cham
 Koordinaten: 2'675'854' / 1'230'065'

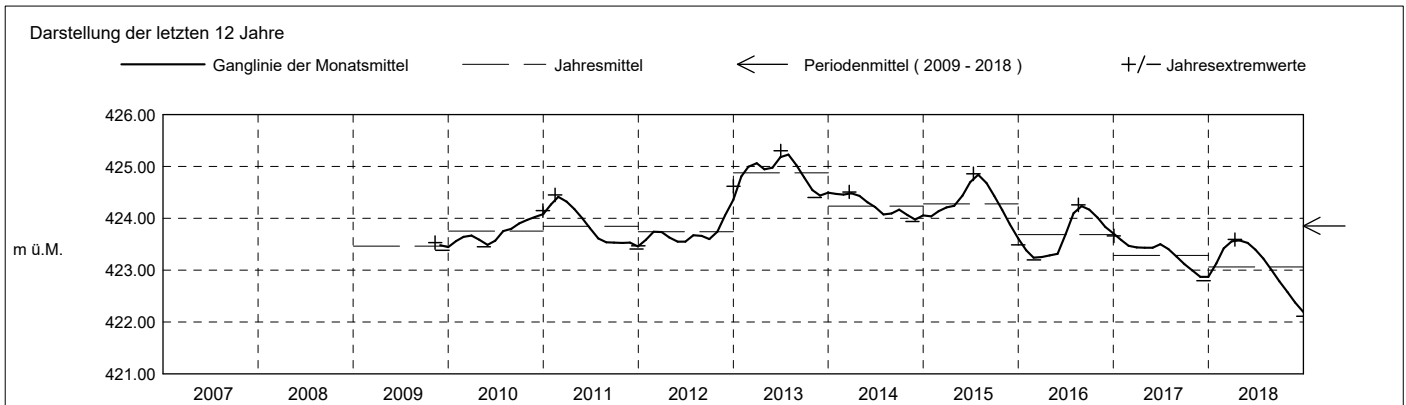
KANTON ZUG
 Amt für Umwelt

Abstichpunkt: 443.13 m ü.M. OK Terrain: 443.43 m ü.M.

2018	janvier	février	mars	avril	mai	juin	juillet	août	septembre	octobre	novembre	décembre																																				
Tagesmittel	1 423.01 -	2 423.31 -	3 423.51 -	4 423.57	5 423.57 +	6 423.46 +	7 423.32 +	8 423.12 +	9 422.89 +	10 422.68 +	11 422.47 +	12 422.28 +	13 422.27 +																																			
	14 423.02	15 423.32	16 423.52	17 423.56 -	18 423.57 +	19 423.46 +	20 423.31	21 423.11	22 422.88	23 422.67	24 422.46	25 422.27	26 422.27																																			
	27 423.03	28 423.34	29 423.53	30 423.57	31 423.57 +	1 423.46 +	2 423.30	3 423.11	4 422.87	5 422.67	6 422.46	7 422.27	8 422.27																																			
	9 423.03	10 423.35	11 423.53	12 423.57	13 423.56	14 423.46 +	15 423.30	16 423.10	17 422.86	18 422.66	19 422.45	20 422.26	21 422.26																																			
	22 423.04	23 423.35	24 423.53	25 423.57	26 423.56	27 423.45	28 423.29	29 423.09	30 422.86	31 422.65	1 422.45	2 422.25	3 422.25																																			
	4 423.05	5 423.37	6 423.54	7 423.56 -	8 423.56	9 423.45	10 423.28	11 423.09	12 422.85	13 422.65	14 422.44	15 422.24	16 422.24																																			
	17 423.05	18 423.38	19 423.54	20 423.57	21 423.56	22 423.44	23 423.28	24 423.08	25 422.84	26 422.64	27 422.43	28 422.24	29 422.24																																			
	30 423.06	31 423.36	1 423.53	2 423.57	3 423.56	4 423.44	5 423.27	6 423.07	7 422.83	8 422.63	9 422.43	10 422.23	11 422.23																																			
	12 423.07	13 423.39	14 423.54	15 423.58	16 423.56	17 423.43	18 423.27	19 423.06	20 422.83	21 422.63	22 422.42	23 422.23	24 422.23																																			
	25 423.08	26 423.40	27 423.54	28 423.58	29 423.55	30 423.43	31 423.26	1 423.05	2 422.82	3 422.62	4 422.41	5 422.22	6 422.22																																			
m ü.M.	7 423.08	8 423.41	9 423.55	10 423.58	11 423.54	12 423.42	13 423.26	14 423.05	15 422.81	16 422.61	17 422.41	18 422.22	19 422.22																																			
	20 423.09	21 423.42	22 423.56	23 423.59 +	24 423.54	25 423.42	26 423.25	27 423.04	28 422.80	29 422.61	30 422.40	31 422.21	1 422.21																																			
	4 423.10	5 423.42	6 423.55	7 423.58	8 423.54	9 423.41	10 423.24	11 423.04	12 422.80	13 422.60	14 422.39	15 422.21	16 422.21																																			
	17 423.11	18 423.43	19 423.55	20 423.57	21 423.54	22 423.41	23 423.24	24 423.03	25 422.79	26 422.59	27 422.39	28 422.20	29 422.20																																			
	30 423.11	31 423.43	1 423.56	2 423.57	3 423.53	4 423.40	5 423.23	6 423.02	7 422.78	8 422.59	9 422.38	10 422.19	11 422.19																																			
	12 423.13	13 423.44	14 423.56	15 423.57	16 423.53	17 423.40	18 423.23	19 423.01	20 422.78	21 422.58	22 422.37	23 422.18	24 422.18																																			
	25 423.14	26 423.44	27 423.57	28 423.56 -	29 423.52	30 423.39	31 423.22	1 423.00	2 422.77	3 422.57	4 422.37	5 422.18	6 422.18																																			
	7 423.14	8 423.45	9 423.57	10 423.56 -	11 423.52	12 423.38	13 423.22	14 422.99	15 422.77	16 422.57	17 422.36	18 422.18	19 422.18																																			
	20 423.15	21 423.45	22 423.56	23 423.56 -	24 423.52	25 423.38	26 423.21	27 422.98	28 422.76	29 422.56	30 422.36	31 422.17	1 422.17																																			
	3 423.16	4 423.46	5 423.56	6 423.57	7 423.51	8 423.37	9 423.21	10 422.98	11 422.75	12 422.55	13 422.35	14 422.17	15 422.17																																			
	17 423.16	18 423.47	19 423.55	20 423.57	21 423.51	22 423.37	23 423.20	24 422.97	25 422.75	26 422.55	27 422.34	28 422.16	29 422.16																																			
	30 423.17	31 423.47	1 423.55	2 423.58	3 423.51	4 423.36	5 423.19	6 422.97	7 422.74	8 422.54	9 422.33	10 422.16	11 422.16																																			
	14 423.17	15 423.48	16 423.57	17 423.58	18 423.50	19 423.36	20 423.18	21 422.96	22 422.73	23 422.53	24 422.33	25 422.15	26 422.15																																			
	27 423.18	28 423.48	29 423.58 +	30 423.57	31 423.50	1 423.35	2 423.18	3 422.95	4 422.72	5 422.53	6 422.32	7 422.15	8 422.15																																			
	11 423.19	12 423.48	13 423.57	14 423.58	15 423.49	16 423.35	17 423.17	18 422.94	19 422.72	20 422.52	21 422.32	22 422.14	23 422.14																																			
+ Maximum	24 423.21	25 423.49	26 423.56	27 423.57	28 423.49	29 423.34	30 423.16	31 422.93	1 422.71	2 422.52	3 422.31	4 422.14	5 422.14																																			
- Minimum	26 423.22	27 423.50 +	28 423.56	29 423.58	30 423.49	31 423.32	1 423.16	2 422.93	3 422.71	4 422.51	5 422.30	6 422.13	7 422.13																																			
	9 423.23	10 423.50 +	11 423.57	12 423.58	13 423.48	14 423.33	15 423.15	16 422.92	17 422.70	18 422.50	19 422.29	20 422.13	21 422.13																																			
	22 423.25	23 423.57	24 423.58	25 423.58	26 423.48	27 423.33	28 423.14	29 422.91	30 422.69 -	31 422.50	1 422.29	2 422.12 -	3 422.12 -																																			
	6 423.27	7 423.58 +	8 423.58	9 423.58	10 423.48	11 423.32	12 423.14	13 422.90 -	14 422.69 -	15 422.49	16 422.28 -	17 422.12 -	18 422.12 -																																			
	20 423.29 +	21 423.58 +	22 423.58	23 423.47 -	24 423.32 -	25 423.13 -	26 422.90 -	27 422.69 -	28 422.48 -	29 422.28 -	30 422.12 -	31 422.12 -	1 422.12 -																																			
Monatsmittel	423.13	423.42	423.55	423.57 +	423.53	423.40	423.23	423.01	422.78	422.58	422.38	422.19 -	m ü.M.																																			
Spitze Datum	423.30 31.	423.51 28.	423.58 24.	423.59 + 12.	423.58 1.	423.47 1.	423.32 1.	423.12 1.	422.89 1.	422.69 1.	422.48 1.	422.28 - 1.	m ü.M.																																			
Amplitude	0.29 +	0.21	0.07	0.03 -	0.11	0.15	0.19	0.23	0.21	0.21	0.20	0.17	m																																			
Jahr	Mittel: 423.06												Spitze: 423.59 (12.04.2018)												Minimum: 422.11 (31.12.2018)												Amplitude: 1.48											



Periode	2009 - 2018 (9 Jahre)																																															
Monatsmittel	423.87	423.95	423.97	423.92	423.89	423.96	423.99 +	423.92	423.83	423.73	423.65	423.63 -	m ü.M.																																			
Monats-Spitze Jahr	424.91 2013	425.08 2013	425.13 2013	425.01 2013	425.04 2013	425.29 2013	425.30 + 2013	425.14 2013	424.90 2013	424.67 2013	424.48 - 2013	424.62 2012	m ü.M.																																			
Monats-Minimum Jahr	423.01 2018	423.20 2016	423.20 2016	423.26 2016	423.25 2016	423.32 + 2016	423.13 2018	422.89 2018	422.68 2018	422.48 2018	422.28 2018	422.11 - 2018	m ü.M.																																			
Monats-Amplitude Jahr	0.29 2018	0.21 2018	0.13 - 2011	0.15 2011	0.34 2015	0.54 + 2016	0.25 2016	0.24 2013	0.27 2015	0.32 2012	0.31 2012	0.40 2012	m ü.M.																																			
Periode	Mittel: 423.85												Spitze: 425.30 (01.07.2013)												Minimum: 422.11 (31.12.2018)												Amplitude: 3.19											



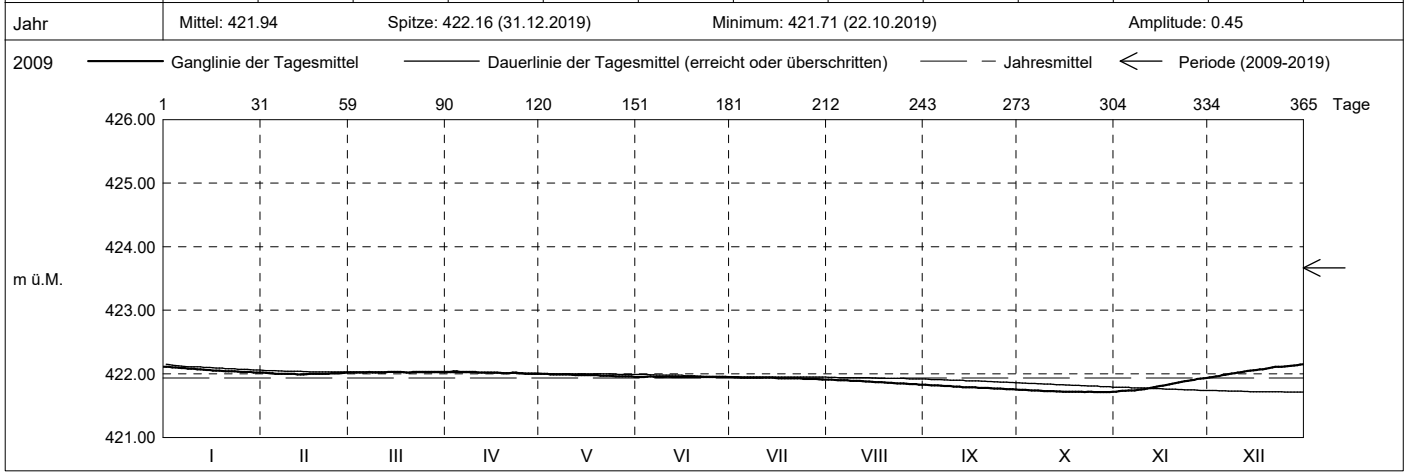
Grundwasserstände

Nr. 6223 Hatwil 2/09 - Cham
 Koordinaten: 2'675'854' / 1'230'065'

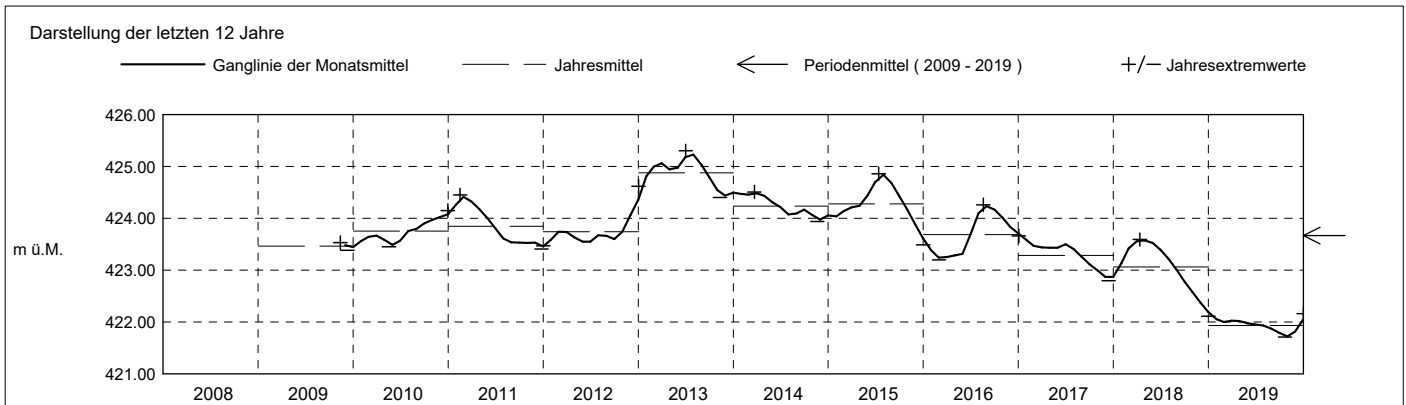
KANTON ZUG
 Amt für Umwelt

Abstichpunkt: 443.13 m ü.M. OK Terrain: 443.43 m ü.M.

2019	janvier	février	mars	avril	mai	juin	juillet	août	septembre	octobre	novembre	décembre	
Tagesmittel	1 422.11 +	422.02 +	422.02 -	422.03	422.00 +	421.95 -	421.95 +	421.91 +	421.83 +	421.75 +	421.72 -	421.94 -	1
	2 422.11 +	422.02 +	422.02 -	422.03	422.00 +	421.95 -	421.94	421.91 +	421.82	421.75 +	421.73	421.95	2
	3 422.10	422.01	422.02 -	422.04 +	422.00 +	421.95 -	421.94	421.90	421.82	421.75 +	421.73	421.96	3
	4 422.10	422.01	422.02 -	422.04 +	421.99	421.95 -	421.94	421.90	421.82	421.74	421.73	421.97	4
	5 422.09	422.00	422.02 -	422.03	421.99	421.96 +	421.94	421.90	421.82	421.74	421.74	421.98	5
	6 422.09	422.00	422.02 -	422.03	421.99	421.95 -	421.94	421.90	421.81	421.74	421.74	421.98	6
	7 422.09	422.00	422.03 +	422.03	421.99	421.95 -	421.94	421.90	421.81	421.74	421.74	421.99	7
	8 422.08	422.00	422.02 -	422.03	421.99	421.95 -	421.94	421.89	421.81	421.73	421.75	422.00	8
	9 422.08	422.00	422.02 -	422.03	421.99	421.95 -	421.94	421.89	421.81	421.73	421.75	422.01	9
	10 422.08	422.00	422.02 -	422.03	421.99	421.95 -	421.94	421.89	421.80	421.73	421.76	422.02	10
m ü.M.	11 422.07	422.00	422.02 -	422.02	421.99	421.96 +	421.94	421.89	421.80	421.73	421.77	422.02	11
	12 422.07	421.99 -	422.02 -	422.02	421.98	421.95 -	421.94	421.88	421.80	421.73	421.78	422.03	12
	13 422.06	421.99 -	422.03 +	422.02	421.98	421.95 -	421.94	421.88	421.79	421.73	421.79	422.05	13
	14 422.06	421.99 -	422.03 +	422.02	421.98	421.95 -	421.94	421.88	421.79	421.72	421.80	422.05	14
	15 422.06	422.00	422.03 +	422.02	421.98	421.95 -	421.94	421.88	421.79	421.72	421.81	422.06	15
	16 422.05	422.00	422.03 +	422.02	421.98	421.95 -	421.93	421.87	421.79	421.72	421.82	422.06	16
	17 422.05	422.00	422.03 +	422.02	421.98	421.95 -	421.93	421.87	421.79	421.72	421.82	422.07	17
	18 422.05	422.00	422.03 +	422.01	421.98	421.95 -	421.93	421.87	421.78	421.72	421.83	422.07	18
	19 422.04	422.00	422.02 -	422.01	421.98	421.95 -	421.93	421.86	421.78	421.72	421.84	422.08	19
	20 422.04	422.00	422.02 -	422.01	421.97	421.95 -	421.93	421.86	421.78	421.72	421.85	422.09	20
+ Maximum	21 422.04	422.00	422.03 +	422.01	421.97	421.95 -	421.93	421.86	421.78	421.72	421.86	422.10	21
	22 422.04	422.00	422.03 +	422.02	421.97	421.95 -	421.93	421.86	421.77	421.71 -	421.87	422.11	22
	23 422.04	422.01	422.03 +	422.02	421.97	421.95 -	421.93	421.85	421.77	421.72	421.88	422.11	23
	24 422.03	422.01	422.03 +	422.01	421.97	421.95 -	421.92	421.85	421.77	421.72	421.89	422.11	24
	25 422.03	422.01	422.03 +	422.01	421.96	421.95 -	421.92	421.85	421.77	421.71 -	421.90	422.11	25
	26 422.03	422.01	422.03 +	422.00 -	421.96	421.95 -	421.92	421.85	421.76 -	421.71 -	421.91	422.12	26
	27 422.03	422.02 +	422.03 +	422.00 -	421.96	421.95 -	421.92	421.84	421.76 -	421.71 -	421.92	422.13	27
	28 422.03	422.02 +	422.03 +	422.00 -	421.96	421.95 -	421.92	421.84	421.76 -	421.71 -	421.93	422.13	28
	29 422.02 -	422.03 +	422.03 +	422.00 -	421.96	421.95 -	421.92	421.84	421.76 -	421.71 -	421.93	422.14	29
	30 422.02 -	422.03 +	422.03 +	422.00 -	421.96	421.95 -	421.91 -	421.83 -	421.76 -	421.71 -	421.94 +	422.14	30
31 422.02 -	422.03 +	422.03 +	422.00 -	421.95 -	421.95 -	421.91 -	421.83 -	421.76 -	421.72	421.94 +	422.15 +	31	
Monatsmittel	422.06 +	422.00	422.03	422.02	421.98	421.95	421.93	421.87	421.79	421.73 -	421.82	422.06 +	m ü.M.
Spitze Datum	422.11 1.	422.02 1.	422.03 4.	422.04 1.	422.00 1.	421.96 1.	421.95 1.	421.91 1.	421.83 1.	421.75 - 1.	421.94 30.	422.16 + 31.	m ü.M.
Amplitude	0.09	0.03	0.01 -	0.04	0.05	0.02	0.04	0.08	0.08	0.04	0.22 +	0.22 +	m
Jahr	Mittel: 421.94 Spitze: 422.16 (31.12.2019) Minimum: 421.71 (22.10.2019) Amplitude: 0.45												



Periode	2009 - 2019 (10 Jahre)												
Monatsmittel	423.69	423.75	423.77	423.73	423.70	423.76	423.79 +	423.72	423.63	423.53	423.48 -	423.48 -	m ü.M.
Monats-Spitze Jahr	424.91 2013	425.08 2013	425.13 2013	425.01 2013	425.04 2013	425.29 2013	425.30 + 2013	425.14 2013	424.90 2013	424.67 2013	424.48 - 2013	424.62 2012	m ü.M.
Monats-Minimum Jahr	422.02 + 2019	421.99 2019	422.02 + 2019	422.00 2019	421.95 2019	421.94 2019	421.91 2019	421.83 2019	421.75 2019	421.71 - 2019	421.72 2019	421.94 2019	m ü.M.
Monats-Amplitude Jahr	0.29 2018	0.21 2018	0.13 - 2011	0.15 2011	0.34 2015	0.54 + 2016	0.25 2016	0.24 2013	0.27 2015	0.32 2012	0.31 2012	0.40 2012	m ü.M.
Periode	Mittel: 423.67 Spitze: 425.30 (01.07.2013) Minimum: 421.71 (22.10.2019) Amplitude: 3.59												



Grundwasserstände

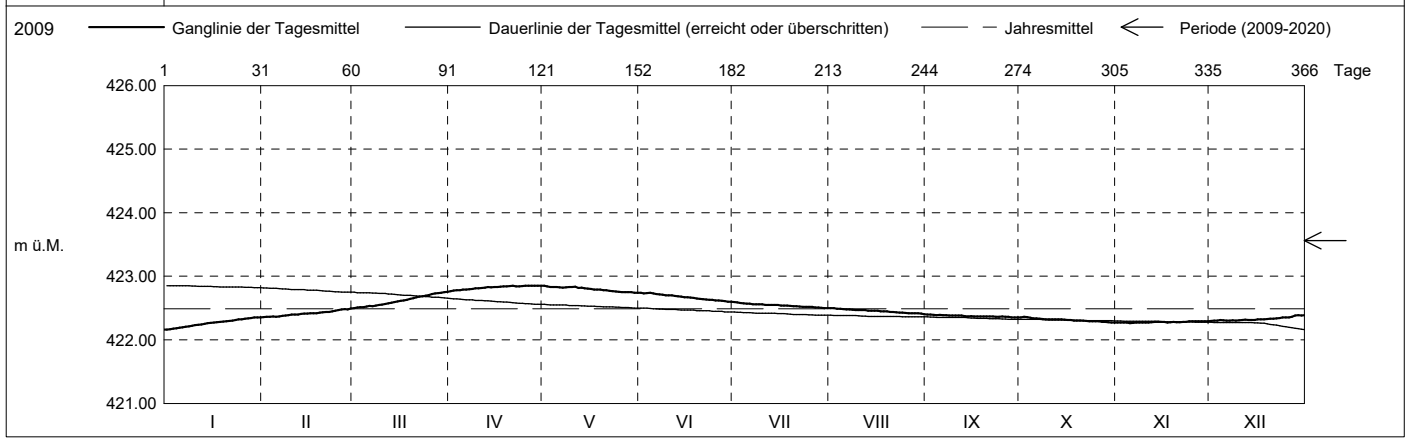
Nr. 6223 Hatwil 2/09 - Cham
 Koordinaten: 2'675'854' / 1'230'065'

KANTON ZUG
 Amt für Umwelt

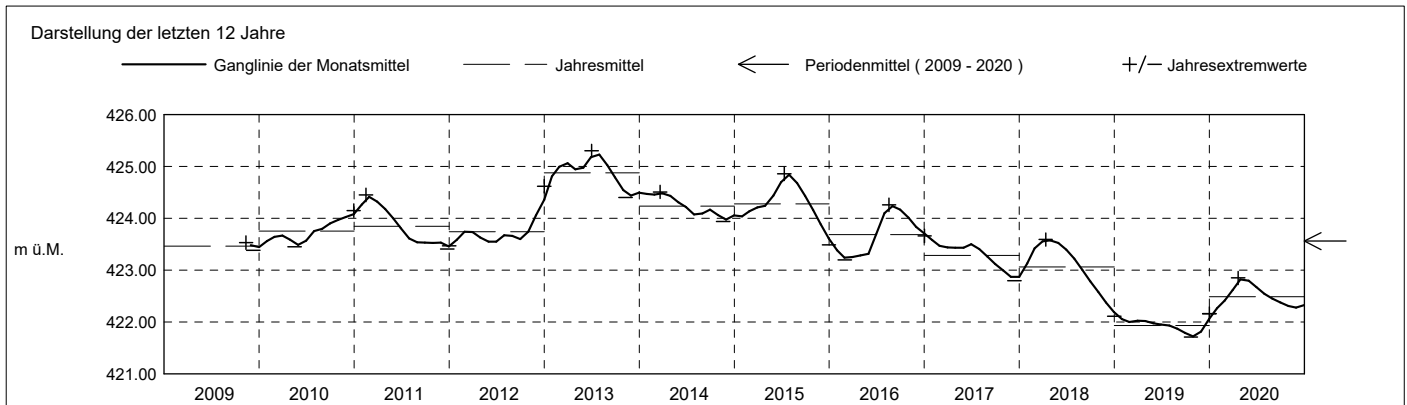
Abstichpunkt: 443.13 m ü.M. OK Terrain: 443.43 m ü.M.

2020	janvier	février	mars	avril	mai	juin	juillet	août	septembre	octobre	novembre	décembre	
Tagesmittel	1 422.16 -	422.36 -	422.50 -	422.76 -	422.85 +	422.74 +	422.59 +	422.50 +	422.40 +	422.35	422.27	422.29 -	1
	2 422.17	422.36 -	422.51	422.77	422.84	422.73	422.59 +	422.50 +	422.40 +	422.36 +	422.27	422.30	2
	3 422.18	422.36 -	422.51	422.78	422.83	422.74 +	422.58	422.49	422.39	422.36 +	422.27	422.30	3
	4 422.18	422.37	422.51	422.78	422.83	422.74 +	422.57	422.49	422.39	422.35	422.27	422.31	4
	5 422.19	422.36 -	422.52	422.79	422.83	422.73	422.57	422.48	422.39	422.34	422.26 -	422.31	5
	6 422.20	422.37	422.53	422.79	422.83	422.72	422.57	422.48	422.39	422.34	422.27	422.30	6
	7 422.21	422.38	422.53	422.80	422.82	422.71	422.56	422.48	422.39	422.33	422.27	422.30	7
	8 422.21	422.38	422.54	422.80	422.83	422.71	422.56	422.47	422.38	422.33	422.27	422.30	8
	9 422.22	422.39	422.55	422.81	422.83	422.70	422.56	422.47	422.38	422.32	422.27	422.30	9
	10 422.23	422.40	422.56	422.81	422.83	422.70	422.56	422.47	422.38	422.32	422.27	422.30	10
m ü.M.	11 422.23	422.40	422.56	422.82	422.84	422.70	422.55	422.47	422.38	422.32	422.27	422.31	11
	12 422.24	422.40	422.58	422.82	422.82	422.69	422.55	422.47	422.38	422.32	422.27	422.32	12
	13 422.25	422.41	422.58	422.83	422.82	422.69	422.55	422.46	422.37	422.32	422.28	422.31	13
	14 422.26	422.41	422.59	422.82	422.81	422.68	422.55	422.46	422.37	422.32	422.28	422.31	14
	15 422.27	422.41	422.60	422.83	422.80	422.67	422.55	422.46	422.37	422.32	422.28	422.31	15
	16 422.27	422.42	422.61	422.83	422.80	422.67	422.54	422.46	422.37	422.31	422.28	422.32	16
	17 422.28	422.42	422.62	422.84	422.79	422.67	422.54	422.45	422.37	422.31	422.27	422.32	17
	18 422.28	422.42	422.63	422.84	422.79	422.66	422.54	422.45	422.37	422.30	422.27	422.32	18
	19 422.29	422.43	422.64	422.84	422.79	422.65	422.53	422.45	422.37	422.30	422.28	422.32	19
	20 422.29	422.43	422.66	422.84	422.78	422.65	422.53	422.44	422.37	422.30	422.28	422.33	20
+ Maximum	21 422.29	422.44	422.67	422.85 +	422.78	422.64	422.53	422.44	422.37	422.30	422.28	422.33	21
	22 422.30	422.44	422.68	422.84	422.77	422.63	422.52	422.43	422.37	422.30	422.28	422.34	22
	23 422.31	422.45	422.68	422.84	422.77	422.63	422.52	422.43	422.36	422.29	422.28	422.34	23
	24 422.32	422.46	422.69	422.84	422.76	422.63	422.52	422.43	422.36	422.29	422.29 +	422.35	24
	25 422.32	422.47	422.71	422.85 +	422.75	422.62	422.52	422.42	422.37	422.29	422.29 +	422.35	25
	26 422.33	422.48	422.72	422.85 +	422.75	422.62	422.52	422.42	422.36	422.29	422.29 +	422.35	26
	27 422.34	422.48	422.73	422.85 +	422.75	422.61	422.51	422.42	422.36	422.28	422.29 +	422.36	27
	28 422.34	422.48	422.73	422.85 +	422.75	422.61	422.51	422.42	422.35 -	422.28	422.29 +	422.38	28
	29 422.35 +	422.49 +	422.74	422.85 +	422.75	422.60 -	422.51	422.42	422.35 -	422.28	422.29 +	422.39 +	29
	30 422.35 +		422.75 +	422.85 +	422.74 -	422.60 -	422.50 -	422.41	422.35 -	422.27 -	422.29 +	422.38	30
31 422.35 +		422.75 +	422.85 +	422.74 -	422.60 -	422.50 -	422.40 -	422.35 -	422.27 -	422.29 +	422.39 +	31	
Monatsmittel	422.26 -	422.42	422.62	422.82 +	422.80	422.67	422.54	422.45	422.37	422.31	422.28	422.33	m ü.M.
Spitze Datum	422.35 28.	422.50 29.	422.76 31.	422.85 + 20.	422.85 + 1.	422.74 1.	422.60 1.	422.50 1.	422.40 1.	422.37 2.	422.29 - 16.	422.39 28.	m ü.M.
Amplitude	0.19	0.15	0.26 +	0.09	0.11	0.14	0.10	0.10	0.05	0.10	0.03 -	0.10	m

Jahr Mittel: 422.49 Spitze: 422.85 (20.04.2020) Minimum: 422.16 (01.01.2020) Amplitude: 0.69



Periode	2009 - 2020 (11 Jahre)												
Monatsmittel	423.56	423.63	423.67 +	423.65	423.62	423.66	423.67 +	423.60	423.51	423.42	423.38 -	423.39	m ü.M.
Monats-Spitze Jahr	424.91 2013	425.08 2013	425.13 2013	425.01 2013	425.04 2013	425.29 2013	425.30 + 2013	425.14 2013	424.90 2013	424.67 2013	424.48 - 2013	424.62 2012	m ü.M.
Monats-Minimum Jahr	422.02 + 2019	421.99 2019	422.02 + 2019	422.00 2019	421.95 2019	421.94 2019	421.91 2019	421.83 2019	421.75 2019	421.71 - 2019	421.72 2019	421.94 2019	m ü.M.
Monats-Amplitude Jahr	0.29 2018	0.21 2018	0.26 2020	0.15 - 2011	0.34 2015	0.54 + 2016	0.25 2016	0.24 2013	0.27 2015	0.32 2012	0.31 2012	0.40 2012	m ü.M.
Periode	Mittel: 423.56 Spitze: 425.30 (01.07.2013) Minimum: 421.71 (22.10.2019) Amplitude: 3.59												



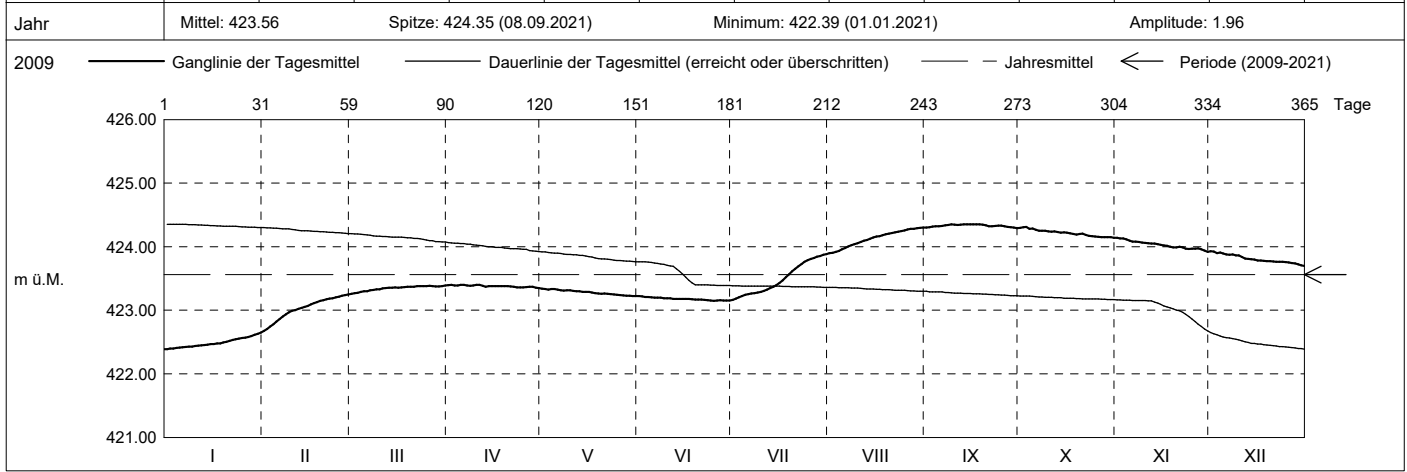
Grundwasserstände

Nr. 6223 Hatwil 2/09 - Cham
 Koordinaten: 2'675'854' / 1'230'065'

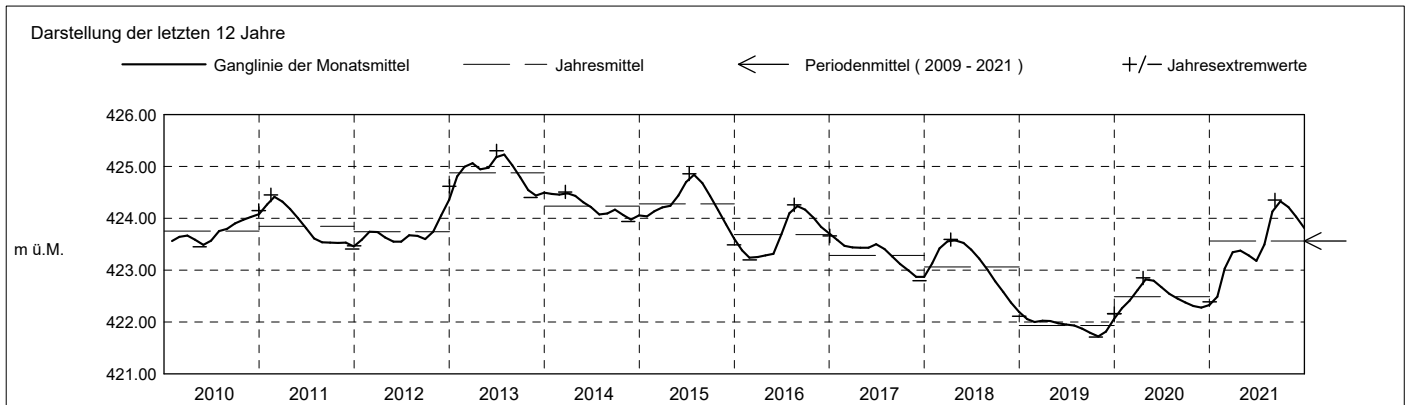
KANTON ZUG
 Amt für Umwelt

Abstichpunkt: 443.13 m ü.M. OK Terrain: 443.43 m ü.M.

2021	janvier	février	mars	avril	mai	juin	juillet	août	septembre	octobre	novembre	décembre																																				
Tagesmittel	422.39 -	422.67 -	423.26 -	423.39	423.34 +	423.22 +	423.16 -	423.90 -	424.30	424.29	424.14 +	423.93 +	1																																			
	422.40	422.71	423.27	423.40 +	423.33	423.22 +	423.18	423.90 -	424.31	424.30	424.13	423.92	2																																			
	422.40	422.74	423.28	423.39	423.32	423.21	423.20	423.92	424.31	424.31 +	424.13	423.90	3																																			
	422.41	422.78	423.29	423.39	423.33	423.21	423.22	423.94	424.32	424.28	424.11	423.91	4																																			
	422.44	422.82	423.30	423.40 +	423.33	423.20	423.24	423.96	424.32	424.29	424.09	423.89	5																																			
	422.42	422.86	423.30	423.40 +	423.32	423.20	423.26	423.98	424.32	424.27	424.08	423.88	6																																			
	422.42	422.90	423.31	423.39	423.32	423.20	423.26	424.01	424.33	424.25	424.08	423.87	7																																			
	422.43	422.94	423.32	423.38	423.31	423.20	423.27	424.02	424.34	424.25	424.07	423.88	8																																			
	422.43	422.96	423.33	423.39	423.32	423.19	423.28	424.04	424.35 +	424.25	424.07	423.86	9																																			
	422.44	422.99	423.33	423.40 +	423.31	423.19	423.29	424.06	424.35 +	424.24	424.06	423.86	10																																			
	422.44	423.00	423.34	423.40 +	423.31	423.19	423.30	424.08	424.34	424.24	424.05	423.84	11																																			
	422.45	423.02	423.35	423.38	423.30	423.18	423.32	424.09	424.35 +	424.24	424.05	423.82	12																																			
	422.46	423.04	423.35	423.37	423.30	423.18	423.35	424.11	424.35 +	424.23	424.05	423.81	13																																			
	422.46	423.05	423.35	423.38	423.29	423.18	423.37	424.12	424.35 +	424.22	424.04	423.80	14																																			
m ü.M.	422.47	423.07	423.36	423.38	423.29	423.18	423.39	424.14	424.35 +	424.23	424.03	423.80	15																																			
	422.47	423.09	423.35	423.38	423.29	423.18	423.43	424.16	424.35 +	424.22	424.02	423.78	16																																			
	422.48	423.11	423.36	423.38	423.28	423.18	423.47	424.17	424.35 +	424.21	424.01	423.78	17																																			
	422.48	423.13	423.36	423.38	423.27	423.17	423.52	424.18	424.35 +	424.20	424.00	423.78	18																																			
	422.49	423.15	423.37	423.38	423.26	423.17	423.56	424.19	424.35 +	424.19	423.99	423.77	19																																			
	422.50	423.16	423.37	423.38	423.26	423.17	423.61	424.21	424.34	424.20	423.99	423.77	20																																			
	422.52	423.17	423.37	423.38	423.26	423.17	423.65	424.22	424.32	424.20	424.00	423.77	21																																			
	422.53	423.19	423.38	423.37	423.26	423.16	423.69	424.23	424.32	424.18	423.99	423.76	22																																			
	422.54	423.19	423.38	423.36	423.25	423.16	423.73	424.23	424.33	424.17	423.97	423.76	23																																			
	422.56	423.20	423.38	423.36	423.25	423.16	423.76	424.24	424.33	424.16	423.96	423.76	24																																			
	422.57	423.21	423.38	423.36	423.24	423.15 -	423.79	424.26	424.33	424.16	423.97	423.76	25																																			
+ Maximum	422.57	423.23	423.38	423.36	423.24	423.15 -	423.81	424.27	424.32	424.15	423.97	423.75	26																																			
	422.58	423.24	423.38	423.37	423.23	423.16	423.83	424.28	424.31	424.15	423.97	423.74	27																																			
- Minimum	422.60	423.25 +	423.38	423.37	423.23	423.16	423.84	424.28	424.31	424.15	423.96	423.74	28																																			
	422.61	423.24	423.38	423.36	423.23	423.15 -	423.85	424.29	424.30	424.15	423.94	423.72	29																																			
	422.63	423.24	423.38	423.35 -	423.22 -	423.15 -	423.87	424.30 +	424.29 -	424.15	423.92 -	423.71	30																																			
	422.65 +	423.24	423.39 +	423.35 -	423.22 -	423.15 -	423.88 +	424.30 +	424.29 -	424.14 -	423.92 -	423.70 -	31																																			
Monatsmittel	422.49 -	423.03	423.35	423.38	423.28	423.18	423.50	424.13	424.33 +	424.22	424.03	423.81	m ü.M.																																			
Spitze Datum	422.66 - 31.	423.25 28.	423.39 26.	423.40 1.	423.35 1.	423.23 1.	423.89 31.	424.30 30.	424.35 + 8.	424.32 3.	424.14 1.	423.94 1.	m ü.M.																																			
Amplitude	0.27	0.59	0.14	0.06 -	0.13	0.08	0.73 +	0.41	0.07	0.18	0.23	0.25	m																																			
Jahr	Mittel: 423.56												Spitze: 424.35 (08.09.2021)												Minimum: 422.39 (01.01.2021)												Amplitude: 1.96											



Periode	2009 - 2021 (12 Jahre)																																															
Monatsmittel	423.47	423.58	423.64	423.63	423.59	423.62	423.66 +	423.65	423.58	423.49	423.43	423.42 -	m ü.M.																																			
Monats-Spitze Jahr	424.91 2013	425.08 2013	425.13 2013	425.01 2013	425.04 2013	425.29 2013	425.30 + 2013	425.14 2013	424.90 2013	424.67 2013	424.48 - 2013	424.62 2012	m ü.M.																																			
Monats-Minimum Jahr	422.02 + 2019	421.99 2019	422.02 + 2019	422.00 2019	421.95 2019	421.94 2019	421.91 2019	421.83 2019	421.75 2019	421.71 - 2019	421.72 2019	421.94 2019	m ü.M.																																			
Monats-Amplitude Jahr	0.29 2018	0.59 2021	0.26 2020	0.15 - 2011	0.34 2015	0.54 2016	0.73 + 2021	0.41 2021	0.27 2015	0.32 2012	0.31 2012	0.40 2012	m ü.M.																																			
Periode	Mittel: 423.56												Spitze: 425.30 (01.07.2013)												Minimum: 421.71 (22.10.2019)												Amplitude: 3.59											



Grundwasserstände

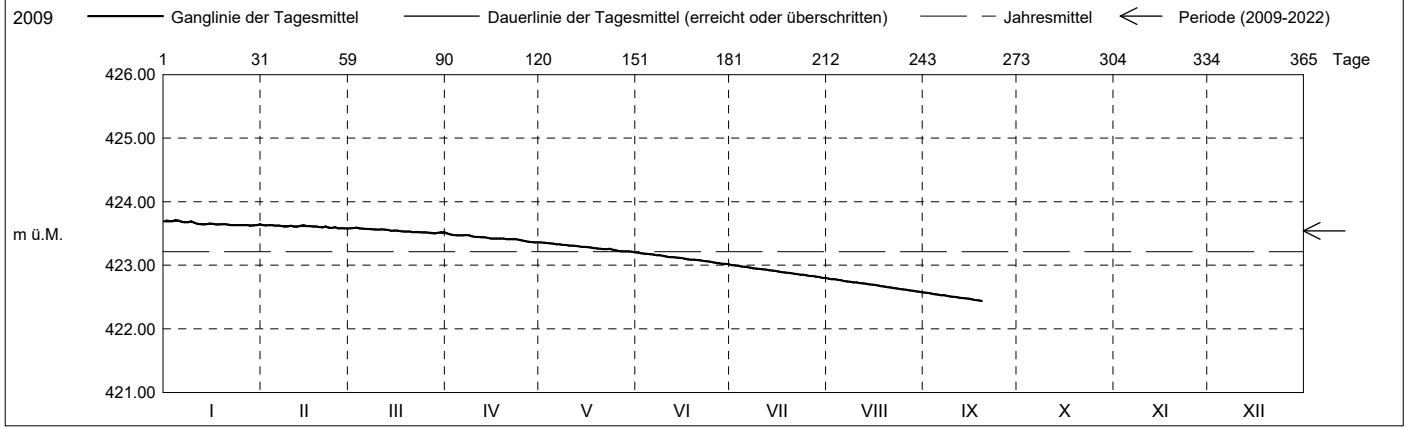
Nr. 6223 Hatwil 2/09 - Cham
 Koordinaten: 2'675'854' / 1'230'065'

KANTON ZUG
 Amt für Umwelt

Abstichpunkt: 443.13 m ü.M. OK Terrain: 443.43 m ü.M.

2022	janvier	février	mars	avril	mai	juin	juillet	août	septembre	octobre	novembre	décembre	
Tagesmittel	1 423.69	2 423.63 +	3 423.58	4 423.50 +	5 423.36 +	6 423.20 +	7 423.00 +	8 422.79 +	9 422.57 +				1 423.69
	2 423.69	3 423.63 +	4 423.58	5 423.49	6 423.35	7 423.19	8 422.99	9 422.78	10 422.56				2 423.69
	3 423.69	4 423.63 +	5 423.59 +	6 423.47	7 423.35	8 423.19	9 422.99	10 422.78	11 422.55				3 423.69
	4 423.71 +	5 423.63 +	6 423.58	7 423.47	8 423.34	9 423.18	10 422.98	11 422.77	12 422.54				4 423.71 +
	5 423.70	6 423.62	7 423.58	8 423.47	9 423.34	10 423.17	11 422.98	12 422.76	13 422.55				5 423.70
	6 423.68	7 423.62	8 423.57	9 423.47	10 423.33	11 423.17	12 422.97	13 422.75	14 422.53				6 423.68
	7 423.67	8 423.62	9 423.57	10 423.47	11 423.33	12 423.16	13 422.96	14 422.75	15 422.53				7 423.67
	8 423.68	9 423.60	10 423.57	11 423.47	12 423.32	13 423.16	14 422.95	15 422.74	16 422.52				8 423.68
	9 423.69	10 423.61	11 423.56	12 423.46	13 423.32	14 423.15	15 422.95	16 422.73	17 422.51				9 423.69
	10 423.67	11 423.62	12 423.56	13 423.44	14 423.31	15 423.14	16 422.94	17 422.73	18 422.50				10 423.67
	11 423.65	12 423.61	13 423.56	14 423.44	15 423.31	16 423.13	17 422.94	18 422.72	19 422.50				11 423.65
	12 423.64	13 423.61	14 423.56	15 423.44	16 423.30	17 423.13	18 422.93	19 422.71	20 422.49				12 423.64
m ü.M.	13 423.64	14 423.62	15 423.56	16 423.44	17 423.30	18 423.12	19 422.92	20 422.71	21 422.48				13 423.64
	14 423.64	15 423.63 +	16 423.54	17 423.43	18 423.29	19 423.12	20 422.92	21 422.70	22 422.48				14 423.64
	15 423.66	16 423.62	17 423.54	18 423.42	19 423.29	20 423.11	21 422.91	22 422.70	23 422.47				15 423.66
	16 423.65	17 423.62	18 423.54	19 423.42	20 423.28	21 423.10	22 422.90	23 422.69	24 422.46				16 423.65
	17 423.64	18 423.61	19 423.54	20 423.42	21 423.28	22 423.09	23 422.89	24 422.68	25 422.45				17 423.64
	18 423.64	19 423.61	20 423.53	21 423.42	22 423.27	23 423.09	24 422.89	25 422.67	26 422.45				18 423.64
	19 423.65	20 423.60	21 423.53	22 423.42	23 423.27	24 423.09	25 422.88	26 422.66	27 422.44 -				19 423.65
	20 423.65	21 423.60	22 423.53	23 423.41	24 423.26	25 423.08	26 422.88	27 422.65					20 423.65
	21 423.63	22 423.61	23 423.52	24 423.41	25 423.26	26 423.08	27 422.87	28 422.65					21 423.63
	22 423.63	23 423.59	24 423.52	25 423.41	26 423.26	27 423.07	28 422.86	29 422.64					22 423.63
	23 423.63	24 423.59	25 423.52	26 423.41	27 423.26	28 423.06	29 422.85	30 422.63					23 423.63
	24 423.63	25 423.60	26 423.52	27 423.40	28 423.24	29 423.05	30 422.85	31 422.63					24 423.63
+ Maximum	25 423.63	26 423.58 -	27 423.51	28 423.39	29 423.24	30 423.05	31 422.84	32 422.62					25 423.63
	26 423.63	27 423.58 -	28 423.51	29 423.37	30 423.23	31 423.04	32 422.83	33 422.61					26 423.63
- Minimum	27 423.63	28 423.58 -	29 423.51	30 423.36 -	31 423.22	32 423.02 -	33 422.82	34 422.60					27 423.63
	28 423.62 -	29 423.58 -	30 423.50 -	31 423.36 -	32 423.22	33 423.02 -	34 422.81	35 422.59					28 423.62 -
	29 423.63	30 423.52	31 423.51	32 423.36 -	33 423.21	34 423.02 -	35 422.81	36 422.58					29 423.63
	30 423.63	31 423.52	32 423.52	33 423.36 -	34 423.21	35 423.02 -	36 422.80 -	37 422.58 -					30 423.63
	31 423.64	32 423.52	33 423.52	34 423.20 -	35 423.05 -	36 422.80 -	37 422.58 -						31 423.64
Monatsmittel	423.65 +	423.61	423.54	423.43	423.28	423.11	422.90	422.68	422.50 -				m ü.M.
Spitze Datum	4. 423.72 +	1. 423.64	2. 423.59	1. 423.51	1. 423.36	1. 423.20	1. 423.01	1. 422.79	1. 422.57 -				m ü.M.
Amplitude	0.10	0.07 -	0.10	0.15	0.16	0.19	0.22 +	0.22 +	0.13				m

Jahr Mittel: 423.22 Spitze: 423.72 (04.01.2022) Minimum: 422.44 (18.09.2022) Amplitude: 1.28



Periode	2009 - 2022 (13 Jahre)												
Monatsmittel	423.48	423.58	423.64 +	423.61	423.57	423.58	423.60	423.57	423.50	423.49	423.43	423.42 -	m ü.M.
Monats-Spitze Jahr	424.91 2013	425.08 2013	425.13 2013	425.01 2013	425.04 2013	425.29 2013	425.30 + 2013	425.14 2013	424.90 2013	424.67 2013	424.48 - 2013	424.62 2012	m ü.M.
Monats-Minimum Jahr	422.02 + 2019	421.99 2019	422.02 + 2019	422.00 2019	421.95 2019	421.94 2019	421.91 2019	421.83 2019	421.75 2019	421.71 - 2019	421.72 2019	421.94 2019	m ü.M.
Monats-Amplitude Jahr	0.29 2018	0.59 2021	0.26 2020	0.15 - 2011	0.34 2015	0.54 2016	0.73 + 2021	0.41 2021	0.27 2015	0.32 2012	0.31 2012	0.40 2012	m ü.M.
Periode	Mittel: 423.54 Spitze: 425.30 (01.07.2013) Minimum: 421.71 (22.10.2019) Amplitude: 3.59												

